

Special Meeting of Council - 5 September 2022 Attachments

9.1.1 PROPOSED PERMANENT PARTIAL ROAD CLOSURE – OUTRIDGE

TERRACE, KALGOORLIE.....2

9.1.1.1 OUTRIDGE TERRACE PROPOSED ROAD CLOSURE PUBLIC

CONSULTATION.....2

9.1.1.2 OUTRIDGE TERRACE CC PERMANENT ROAD CLOSURE.....16

9.1.1.3 POST CAMPAIGN REPORT - OUTRIDGE TERRACE 0822.....24

9.1.1.5 CO 27062022 MIN 766 ATTACHMENT 6910 2.....30


9.1.1.6 KALGOORLIE BOULDER BASKETBALL ASSOCIATION

PROPOSED ROAD CLOSURE - SURVEY PLAN.....31

9.1.1.7 OUTRIDGE TERRACE ROAD CLOSURE PROPOSAL.....32

9.1.1.8 PROPOSED REDEVELOPMENT OF EXISTING BASKETBALL

STADIUM.....33

 Public consultation - permanent partial road closure Outridge Terrace					
Date Received	Name	Address	Email	Support or Object?	Comment
	#1			Conditional Support	I support closureif Outridge Tce near the basketball stadium only with conditions. Closure of the road will require changes to surrounding streets as vehicles will need to be diverted. As a result there will need to be improvements to Park Street and the intersection of Broadarrow Rd/ParkStreet/Victoria East. Improvements should include resealing, renew kerbing and improving intersection for safety.
	#2			Conditional support	Council need to actually FIX and RESEAL the tarseal and fix the potholes all around the basketball stadium PARK STREET and Brookman street for the local residents and traffic that was pushed off from using Outridge terrace in the initial stages of the redevelopment with the road rumps . Council do the bare minimum of road and kerb maintenance in our area. Theres always a pile of silt and shitty gravel on the corner of Park and Brookman from whenever it was when we last had a bit of rain and theres always massive potholes everywhere from whenever it was when we last a bit more rain. Park Street is the stupidest and weirdest piece of road because the council dont have it marked as a dead end road and cars are always just kerbing it to get to hannan street. The council is making local traffic use Park Street, so fix up the holes please and get some decent road signage up.
	#3			Support	My opinion only. As being with the basketball association for over 50 years. I was there when the current stadium was built I have seen the sport grown so much over the years it was overdue for a new stadium and having the road closed off shouldn't effect local traffic. As there is always Park street and Croesus street its called progress so hope the road can be closed off. Also needing extra area for parking.
	#4			Support	Approve of this closure.
	#5			Support	The road should be closed off but also adequate parking facilities installed. Public transport area should be put in place. Disabled facilities access from car park. Outside solar Lighting which can be used when the facility is utilised.
	#6			Support	Yes, closing it would be a safer option
	#7			Support	Closing the street and building a new stadium is going to see an increase in participation in this sport. The stadium is way past its used by date and needs to upgraded to suit all users. The road out the front of stadium is extremely dangerous when games are finished/starting with the amount of traffic and street lighting
	#8			Object	Total disagree to this as it will increase traffic on the residential side of Park street. There is not enough room for trucks and heavy vehicle's on Park street as it is not wide enough .It's not going to be safer as the car's leaving the basketball stadium, leave speeding off the side of the road . I do not understand why they did not move out to the Oasis as thats why it was built. Is it because of their liquor licence ? After every night basketball games,we have to put up with the horning as people are leaving the basketball stadium. As discussed last time no one was in favour of this change. You's didn't listern to us in our previous meetings so what's going to change. NOTHING
	#9			Support	I am in favour of this.
	#10			Support	That road should have been closed years ago. Not safe having kids going to basketball with that road open. Great initiative to close it. P.S at least ckb did it this for the basketballers & not FCT. (nothing against Ric or Paul in planning)
	#11			Support	Please close the road as it will make a minimal difference. This will improve the traffic flow in the area by reducing options to hoon on these streets with the interruption of the straight road with a larger run off area, and assist having less maintenance needed on roads that are so wide and rarely used.
	#12			Support	Long overdue!
	#13			Support	Full support
	#14			Support	This needs to happen, that stadium is so old and ran down need to be bigger
	#15			Support	I have no objection to the permanent closure of Outridge Terrace to accommodate for the expansion of the Kalgoorlie basketball stadium.
	#16			Conditional Support	I am in favour of the closure of Outridge Terrance Kalgoorlie provided a suitable alternative is found for access to the nursing home for commercial purposes and the removal of rubbish bins etc.
	#17			Support	I think this is crucial to the continual development of the city and the community. The disruption to local traffic would be minimal over the benefits this would provided to junior and senior development in the goldfields and have a fantastic new facility for families and kids to be apart of.
	#18			Support	I support the closure of outridge terrace to allow for safe pedestrian access to the new basketball facility. This new venue is important for the development of basketball in the goldfields.
	#19			Support	Please let us have more space for basket ball in this community. The place has been the same since I was a kid so time to upgrade. Basketball is huge in Kalgoorlie.

#20	Support	There is a lot of congestion on that street. It will be safer in the long run to permanently close the road.
#21	Support	Outridge terrace not required. Would prefer larger stadium
#22	Support	The people of kalgoorlie - boulder deserve an improved and enlarged basketball stadium. If closing this small part of a road means getting that, then it should be done. Park street can be used as a bypass to get to all other areas required.
#23	Support	I support the section being made into a car park. Please consider suitable pedestrian access, security monitoring, access to drinking water. Please also note, once a year the St Barbara's Committee bring heavy machinery to Hannans Street, the access on outridge Street to brookman Street is integral to ensure the floats have access to porter Street via outridge terrace. Temporary bollards in place, and kerbing that doesn't get damaged if a heavy vehicle needs to pass thought.
#24	Support	The new stadium looks great and I think the road closure is a good idea.
#25	Support	Road closure approved
#26	Support	Do what needs to be done to get the new stadium built ASAP! Our current facility is a disgrace and embarassment to the city. Its unhygienic and unsafe. If you cant close Outridge Terrace, give badketalball a new piece of land elsewhere to build the stadium. We cannot maintain a state basketball team in these conditions. They are the worst in the state. Even Kambalda has better favilities than Kalgoorlie
#27	Support	Don't see any potential issues here, there is another road which residents can use and to see the stadium development go ahead would be a massive boost for the Basketball and the Sporting Community in the Goldfields
#28	Support	I agree this permanent partial road closure should go ahead
#29	Support	A new and upgraded stadium is a MUST! I absolutely support this
#30	Support	Close the old stadium to build the amazing new one!
#31	Support	This is a great idea
#32	Support	The stadium needs to be upgraded
#33	Support	I support the partial road closure to upgrade the basketball stadium. The stadium is in desperate need of upgrading and is required for better running of the sport in this town
#34	Support	Yes close the road for safer entrance to upgraded stadium, it makes sense since there are other roads you can use
#35	Support	As an outridge terrace resident, I am all for this change to allow the basketball stadium to rebuild.
#36	Support	All I got to say is go around it will be great to see a better basketball stadium
#37	Support	I support the road closure
#38	Support	Fantastic opportunity to improve the old facilities - hopefully the new facilities will encourage year round basketball programs instead of the current 16 week season
#39	Support	I think upgrading the courts and the closer off outridge terrace is a great idea. The courts are in such bad shape they need a upgrade for our kids and also for when visitors come and watch games
#40	Support	Closing Outridge Terrace will keep players and spectators safe from traffic. Basketball has become a popular sport in the goldfields. With the closure of the road this will also make way for expansion of the basketball stadium to cater for the future.
#41	Support	Honestly doesn't phase me at all. The stadium desperately needs the rebuild, we can't be hosting NBL West games here in the state it's in. Even Kambalda and Esperance have nicer stadiums than us. A partial closure to help the rebuild is what we need and shouldn't majorly affect the public as it's not a widely used road, if the back road is still accessible and there's a different access point into the stadium, I'm sure it shouldn't matter too much
#42	Support	I believe that the closure of this road will only serve to enhance the safety of pedestrians and a new Basketball Stadium will be a great asset to Kalgoorlie for many years to come. Closing this road will not affect traffic as Park street and Croesus street will be able to accommodate local traffic and by turning Outridge Terrace into a Car Park will deter people from using the surrounding streets to park to the annoyance to local residence. I support the closure.
#43	Support	I don't use this access way but believe it will be a great benefit to the city as a whole.
#44	Support	I think it's a great idea to close the road. There will be minimal impact to the residents as long as the car park can still be accessed from the Hannan St side of the venue. This will be a small change to ensure our community has an incredible sporting complex
#45	Object	This project was rejected by the community when it was initially proposed many years back and it still is. This will direct all traffic to the tiny side street of Park Street, making it extremely congested and unsafe, also very inconvenient for those who live there. The basketball stadium needs to use the space it already has, not take from the community. It's also the associations responsibility to ensure it's members are being safe when crossing the road. The amount of times people have double parked and just let their kids jump out of the car into oncoming traffic, that is their fault and not that of those who use the street to drive through. So many other sporting complexes have this issue where the car park is across the road from the grounds, why don't they get to just claim the road and expand out? This idea was not a bright one many years back, and it still isn't today.

#46	Support	Yes to the closure of the road. The stadium upgrade is important for the Goldfields community (youth and adults) and will greatly benefit the sports held within. Closure of the road, is critical to this going ahead professionally.
#47	Support	I'm all for the closure
#48	Support	Good idea for the safety of basketball goers
#49	Object	Hi, Southern Cross Care WA object to the closure of Outridge Terrace, we request that the road remain an open public access. The Victoria Park Nursing Home and Hostel has a number of deliveries via Outridge Terrace including gas. Any closure of Outridge Terrace would adversely affect the operations of the facility. Thank you. Ian Nichol. Chief Property Officer. Southern Cross Care WA.
#50	Object	I strongly disagree with this proposal. By closing this street off to the public, it will increase traffic on the side streets in the area. Park Street and Victoria Street will become dangerous to full time residents who live in the area, due to the width of these streets. This was shown to the CKB when the basketball association made its original request to close this road off a few years back. Victoria Street residents have limited off street parking. The danger at the stadium can be managed, which speed humps have been introduced to slow traffic, and members of the basketball association need to stop double parking at the entry gates to let their kids out. I am a member of the hockey association. We asked some time ago to put speed humps on the road outside the stadium to slow traffic and this did not happen. I would of thought having a school in the area would have made it a priority. I feel the basketball stadium needs to seek other locations for their expansion, not risk the lives and livelihood of the full time residents who live in the area. I would also like to mention that you will be building under over head high voltage power lines. You may need to look at this and see what restrictions there are in place about this. The hockey stadium have the same problems as the basketball stadium in roads and danger, with less available parking. If there is an incident it needs to be managed by our association and passed down through the committee members of each club, to pass onto members. I have lived at my address for over 30 years. I have used this road for an extremely long time and I can assure you the only time I have had any close calls at the stadium is when the parents drop kids off at the gate (double parking illegally) and let them get out of both sides of their vehicle without any consideration of approaching traffic from behind. It is not the location of the road that is the danger, it is the common sense of the road users in the area. Please do not inconvenience permanent residents in the area for the sake off a few club members who can't do the right thing. It's a big price to pay for the select few. I also can't help but feel that this will go through due our current Mayor having a strong interest in this sport in particular. His children have been a big part of the Kalgoorlie Basketball Association and Mayor John Bowler is a life member of the Olympians Basketball Club. He has a strong interest in seeing this particular sport to be advantaged by his influential position in the community. No one can just claim roads in their area if they outgrow their residence. If you have too many kids for the amount of rooms in your house you can't just expand. You need to relocate.
#51	Support	I think this is a great idea that has been needed for a very long time. I visit my sister at the nursing home on a weekly basis and drive down outridge terrace and there is normally no other cars using this road. With the new stadium with a new carpark you will find it will be safer for everyone.
#52	Support	Absolutely in support and no issues with the permanent road closure to make way for the new basketball stadium. The new stadium is long overdue and will be a massive asset to the community. People will adapt to the changes and I'm sure change their minds when they see the new facility in operation.
#53	Support	I 100% support the partial closure of Outridge Tce for the basketball stadium upgrade to progress.
#54	Support	Fully support the road closure as its essential for the development of Basketball in Kalgoorlie as its well overdue
#55	Support	This needs to get done, it's a great outlet for getting people into sports and it supports school programs. This association has been here for a long time. Close the road and support the association that gives back to a healthier community and provides a stepping stone for people who can get to a elite level, most of it off it's own back.
#56	Support	The volume of children that use the basketball stadium and cross this road, absolute no brainer to close it and keep the kids safe.
#57	Support	I approve the closure to enable the upgrade of the Kalgoorlie basketball stadium, this town needs upgraded facilities!
#58	Support	Such a great idea. Would love to see the closure of a road to benefit the town and so many different sporting groups and community groups.
#59	Support	In favour of the road closure to facilitate the upgrade of Kalgoorlie Basketball Stadium
#60	Support	Since you have provided access to Park St from Brookman - when I rarely use that street to go "the back way" home - I don't mind going via Park St to avoid the speed bumps. I've seen comments from locals in that area that they are doing the same. The intended road closure will still see stadium goers entering the car park via both ends of outridge tce, as they do now. We need to keep moving this Town in a positive direction not knocking back progression.
#61	Support	As a committee member of the 🏀 Goldfields Rep Club, which is located across the road from the basketball stadium, I support the closure of Outridge Terrace between Brookman Street and Victoria Street. As a small community theatre with our highest usage nights often coinciding with basketball fixtures, parking in this area is at a premium. The plans as outlined will improve not only parking availability but also safety - currently children are crossing Outridge and Brookman streets at all points, which in low light and high traffic can be precarious

#62	Support	Absolutely long overdue improvement, upgrade, extension of the facility. If street closure is a part of the evolution of this community's recreational facilities, and is managed respectfully with those impacted the most, then proceed the with the provision of ample parking spaces.
#63	Support	Astounded this is even a survey. Huge benefits for not just the whole town but region to enhance our livability we need these facilities - in fact all sports need to be at this standard. And extra 30 metre drive is nothing compared to the safety and well fair of people using this development now and in the future.
#64	Support	Well overdue upgrade needed
#65	Support	I support the proposed permanent partial road closure of Outridge Terrace to support the upgrade and expansion of the Kalgoorlie Basketball Association facility.
#66	Support	So happy for the road to be closed to build the new stadium
#67	Support	It's about time the council made the decision to block that area totally off for the safety of all who access that area _for parking and further extension.
#68	Support	I am happy for the road to be closed to build the new stadium. There are other roads that can be used
#69	Support	I support road closure
#70	Support	the street should get closed for better access to the basketball stadium
#71	Support	Basketball needs the upgrade
#72	Support	I am in great support of this project as it is well over due and upgrading facilities such as the basketball stadium will allow great use, more opportunities and increase the liveability of our town
#73	Support	This is much needed for Kalgoorlie-Boulder
#74	Support	The facilities require updating
#75	Support	We need a new stadium!
#76	Support	I would be happy to have this road closed and the basketball stadium be upgraded to enclose this area. This stadium provides so much to the community and is something that is needed.
#77	Support	These courts are utilised by so many children,youth and adults (both indigenous and nonindigenous) to enjoy basketball. Very outdated and needs updating.
#78	Support	Blocking the road off has to be done for the growth and development of basketball and any major indoor sports in the Goldfields, A proper set out car park and entry and exit areas are required to ensure safety of all customers and users.
#79	Support	I strongly support the road closure. The KBBA Stadium is in desperate need of an upgrade to accommodate the rise in sporting people wanting to play a variety of sports. The community has been struggling for years with the situation they are in now where teams can't train due to no courts. It is a necessity.
#80	Support	I am a homeowner that currently lives on Victoria Street, adjacent to Outridge Terrace. Whilst this closure may mean more traffic on our street, I 100% support this permanent road closure. My family and myself are regular users of the current basketball stadium and the facility is well below standard. Games are cancelled when it's raining because of significant leaks, and are also cancelled when it's above 38 degrees due to heat. I believe the new stadium will benefit far more community members that it will negatively impact a small number of surrounding residents; and as such support this road closure.
#81	Support	This upgraded facility is badly needed for our community. The current facility is run down and does not provide adequately for our basketball community. Please approve and give us a facility equal to our city colleagues. We should not have poor facilities because we are rural.
#82	Support	The basketball stadium is in desperate need of upgrade. Outridge Terrace should definitely be closed to enable this facility to be established.
#83	Support	This basketball stadium upgrade is a necessary project to increase the livability of many residents in Kalgoorlie. The basketball stadium is well overdue and severely lacking in comparison to other regional areas such as Esperance which has recently completed their new stadium. Other locations and refurbishments to the existing are not feasible. The implications of the build to nearby residents are minimal the comparison to the benefits this project will provide.
#84	Support	In favour of closure, the basketball stadium is in dire need of upgrades. My kids play basketball in the summer, and it's very hot but when rains games are canceled. With the outside courts no longer able to be played on due to being unsafe, need more indoor courts. Also current state of stadium is an embarrassment when u have visiting nbl teams coming to play against the giants
#85	Support	For the safety of players and the benefit of the community this should be done
#86	Support	We need the new stadium. Close Outridge.

#87	Support	I am in full support of closing the section of Outridge Terrace that is requires to be closed to allow for the construction of the new basketball stadium. The current situation with traffic and parking is extremely dangerous. This new stadium will be a boost for the town and will be so much safer for everyone to access.
#88	Support	Fantastic idea, we certainly need it please do it
#89	Support	I love that there are plans to finally upgrade the incredibly outdated basketball stadium. As Park Street runs parallel to the portion of Outridge Terrace in question - cannot this be upgraded and utilised as a bypass? I believe it would be sensible to incorporate that portion of Outridge terrace along with the area of land between Park Street and Outridge Terrace into the Stadium itself. We have a fabulous modern Soccer facility - lets do the same for Basketball.
#90	Support	The stadium needs to be upgraded. Close the road. It may impact a few negatively, but it will impact so many more positively.
#91	Support	We desperately need a new stadium, this will have minimal impact and be beneficial to the many families that use these facilities.
#92	Support	The basketball stadium is in desperate need of an upgrade. With the local participation numbers playing basketball, and the Goldfields Giants playing at a state league 'professional' NBL level, facilities need to be improved to cater for the growth of the sport. The redevelopment vital for the ongoing sustainability of the sport.
#93	Support	It is about time this facility has a major overhaul it has been sub par for too many years In summer my children who are now grow young men used to have miss games if it rained because of the shortage if inside courts , and if you were inside it was horrendously hot in the tin shed ,the huge fan out in for the Giants games later helped a little but compared to facilities at city stadiums it's an embarrassing situation The toilets and change rooms have been a disgrace since before 2000 please make the changes and allow those that love the sport have a place worthy of being proud and up to some of the talent we have here in the Goldfields to allow them to thrive in their chosen sport
#94	Support	Close it and build a new stadium already. Please.
#95	Support	I support the closure of outridge terrace to enhance the Basketball stadium. We need the space to ensure the proposed build can go ahead after what has been a long time of utilising the ageing facility. This build will support the community needs and ensure Kalgoorlie can host and offer more within the community and to external visitors
#96	Not stated	..
#97	Support	The stadium is due for an updo. For the size of our town Kambalda have a better stadium that us. Needed to be renovated both indoors and out. Spend money on places that families use which is sporting events.
#98	Support	Support sport.
#99	Support	This is a great idea, and would bring much needed money into the community as well as a great facility
#100	Support	Considering how popular and well supported our bball teams are and sharing the venue for other uses would be very grateful for an upgrade money definitely not wasted
#101	Support	Desperately need new basketball stadium - do what is needed to make it happen.
#102	Support	Redevelopment of the basketball stadium is 25 years overdue. It is required to provide accessibility to everyone to play basketball/sport in facilities that cater for everyone.
#103	Object	The new stadium should be built near the Oasis, the logical place for it. The existing structure should be razed and a community garden park established in its place with Outridge Tce left open. The traffic situation during a game at the existing venue is ridiculous.
#104	Support	Upgrade desperately needed.
#105	Support	Im more than happy for the road to be closed to build the stadium.
#106	Support	I attend the basketball stadium at least 3 or 4 times a week, during the off season of my children's basketball season even more so during the season. The congestion of traffic on Outridge Terrace is a real safety concern. With people and obviously there cars leaving the stadium at the same time there is a real risk that somebody, even more tragically a child will be hit by a departing car. Outridge Terrace should permanently be closed for the safety of the many many children and families who attend the stadium on a daily basis.
#107	Support	They need the space, really needs an upgrade.
#108	Support	The closure has no negative impact on nearby residents to warrant not moving ahead with the proposal. It shouldn't stand in the way of this desperately needed project.
#109	Support	I am in support of the plan
#110	Support	The current stadium is not fit for purpose and in need of an upgrade to further development of basketball in Kalgoorlie. My teen daughter plays basketball at different levels including NBL1, and having a first class facility in town would be fantastic for her growth in the sport.

#111	Support	Basketball WA fully support the Closure of Outridge Terrace to allow the redevelopment of KBBA Stadium. As the council is aware the KBBA has recently been successfully in securing funding from all levels of Government (Local, State and Federal) for the upgrading of the 43- year-old Neil Hansen Basketball Stadium. The amount of committed funding is \$12,996,400.00 GST exclusive. The upgrade project will include the addition of two full sized courts, one being a show court which can be used for all relevant sports to host high profile games, upgraded and modernized amenities and a full internal refurbishment of the old three court stadium. Basketball is one of the largest participation sports in the Goldfields with up to 1500 active members and promotes the City of Kalgoorlie/Boulder nationally with telecast NBL 1 games, which now include both a men’s and women’s team. BWA are very proud that our highest level competition in the state includes regional teams and the Giants have successfully represented your Shire in Western Australia and now on a national scale. We have worked very closely with KBBA to obtain the support and funding for the proposed upgrades to KBBA stadium as it no longer is fit for purpose and safe for this level of competition. Without the work being completed it will be difficult for the Giants to remain in the competition in the medium to long term. The KBBA domestic summer season has large junior and senior team participation numbers, including indigenous and multi-cultural membership. The KBBA proudly supports the local Kalgoorlie/Boulder community, providing junior development programs and pathways opportunities for players to elite levels. Basketball WA has 2 development officers based in Kalgoorlie that support this important community work. The closure of Outridge Terrace between Brookman Street and Victoria Street is the most practical and functional outcome for the basketball extension and redevelopment. The closure will allow the addition of the two new courts with suitable alignment and modern amenities to be designed within the facility. It will be the best basketball/netball facility in Regional Western Australia. The closure will allow KBBA to redesign and increase the size of the basketball car park, while at the same time removing the safety hazard of crossing the road. The Stadium and KBBA has been successful because of the original investment some 45 years ago and the placement of the facility so close to Town. A new facility with a safer and larger car park will allow KBBA to flourish and support the local community for the next 40 years. We ask the council to consider this request as it is “A ONCE IN A GENERATION PROJECT AND OPPORTUNITY”. The funding is unlikely to become available again and basketball has fought hard to make this happen. The council has acknowledged the need to upgrade the facility and the value that the KBBA brings to the quality of living in Kalgoorlie/Boulder, including the attraction and retention of residents and importantly families. Therefore, BWA urge the Council to support the closure.
#112	Support	A carpark and safe access is definitely needed.
#113	Support	It is important for the community that the stadium is upgraded. The facility can not facilitate the demand for all sports as is. The road closure ensures our future generation can all play & train for their sports in Kalgoorlie.
#114	Support	The development is long overdue and needed and this proposal has been on the cards for as long as I can remember. There's also a safety issue with children having to cross the road after games both during the day and night (when visibility is average as well). Please approve this proposal in the best interests of basketball in the Goldfields and allow the upgrade to proceed.
#115	Support	Too many people speed through this area, even when basketball games are on, and there are pedestrians in and out constantly. It amazes me that no one has been injured already.
#116	Support	The stadium has very little carparks and pedestrians are always walking in front of cars. A drop off section would be great as well as more car parks.
#117	Support	Definitely close it. it will keep the basketball kids and spectators safer and there is an easy alternative route that is already used by most people.
#118	Support	Yes
#119	Support	Can't see it being an issue. Safety of the children is most important.
#120	Support	I write to confirm Volleyball WA's support for the closure of Outridge Terrace between Brookman Street and Victoria Street as part of the KBBA stadium redevelopment project. In addition to the pedestrian safety benefits, this closure will allow the addition of the two new courts which will therefore increase the number of volleyball courts available in the City. Volleyball is a growth sport in WA and we have identified that there is a need for additional volleyball playing facilities to support this ongoing growth. We value the opportunity to be involved in this project, as this will provide the entire sport of volleyball with access to additional indoor volleyball courts. Kalgoorlie Volleyball Association has been affiliated with Volleyball WA for the last six years and the Association continues to provide opportunities for juniors and adults in the community to stay active, connected and enjoy volleyball. At present, the ability for the Association to expand their membership and participation activities is being directly impacted by difficulties accessing facilities in Kalgoorlie that can be used for both training and games. Volleyball WA will continue to work with the City of Kalgoorlie-Boulder, Kalgoorlie-Boulder Basketball Association (KBBA) and all other parties to move forward with this stadium upgrade.
#121	Support	It's a good idea. The current layout is not good.
#122	Object	Please don't. I drive that road everyday to easily access my house.
#123	Support	Close it
#124	Support	Outridge Tce is barely accessed apart from services ie rubbish truck, electricians, gardeners, food deliveries etc to the nursing home. It can be closed as long as access is still provided to the back of nursing home.
#125	Support	Closed road will make it safer by stopping kids having to cross the road to access the stadium.

#126	Support	I agree with the proposed partial closure
#127	Object	Keep the road open.
#128	Support	It's a great idea. It's quite dangerous there after any basketball as cars aren't watching out for pedestrians and kids just cross without paying any attention.
#129	Support	As a former player and long term resident ... preference would be have the stadium built from scratch in another area near other sporting facilities. Was something advocated prior to building of Oasis. As a user of roads around the area, knowledge of area, I believe this closure would not adversely affect traffic flow or residents in area to building the new complex.
#130	Support	Close the road
#131	Support	Great idea.
#132	Support	This is well overdue, and will be very good for the community
#133	Support	I think this should be a easy decision. To build a much greater facility for the basketball community against a road that clearly, effectively could easily be removed without any disturbance. It's a no brainer. Vehicle movement is barely affected due to a parallel road within 50 metres. Let's give Kalgoorlie the stadium it deserves.
#134	Support	Do it! Well overdue, a great look for giants home games and future basketballers!
#135	Support	Just do it.
#136	Support	Happy for road to close for much needed stadium upgrade
#137	Support	Most definitely for the closure of Outridge Terrace to allow the Basketball Association the room to expand out and set themselves up for the future with a stadium redevelopment. Park St is a suitable alternative to divert traffic and since the speed humps have been installed traffic has declined dramatically on Outridge Tce.
#138	Support	I support the road closure, it is a small inconvenience for a great development that will benefit a wide proportion of the community.
#139	Support	Not too sure why this hasn't been approved yet. It is not too detrimental to anyone involved, more a slight inconvenience that won't noticeably affect residents. Essentially, anyone who is disagreeing to this is preventing a growing sport evolve from an outdated, and at times dangerous facility, and stopping local kids from playing basketball and enjoying the game for what it is...over a road! Would be stupid of there council to not approve.
#140	Support	This development is a must for the growth and development of basketball in our community. I have lived here my whole life and been involved in basketball since I was six years old. Our stadium sorely needs major impressment and development to keep up,with other towns and regions. How can we expect other SBS teams to come here and have to deal with the shit change rooms and facilities we currently have.
#141	Support	The stadium is a great idea and I fully support the road closure
#142	Support	This would be a great development and beneficial for the community.
#143	Support	I agree with the road closure and upgrade of stadium. We need show off our basketball team and giving them something to be proud of when playing against other teams
#144	Support	Definite road closure and expansion required. The KBBA has outgrown its existing facility and needs the road space to build the new stadium to bring our facilities into line with others in the state. The inconvenience to a very small minority is far outweighed by what this facility can offer a vast majority of residents in this town.
#145	Support	I think it is a good idea to close that piece of road and develop the basketball stadium.
#146	Support	On behalf of Imperials Netball Club Inc I am writing to provide full support of the closure of Outridge Terrace as part of the KBBA new stadium redevelopment. Our club believes the upgrade of the stadium to add two new courts will not only benefit basketball but a variety of other local sports such as netball just to name one . We believe that the closure of outridge terrace between brookman street and Victoria street is in the best interest and most practical outcome for the redevelopment of the stadium. We have been training at the KBBA courts for netball for over 15 years but need to squeeze our teams onto one court and most teams train together as there are not enough courts available. We also believe the closure will provide a greater safety for young children arriving and leaving the stadium trying to cross over the road to access the carpark. We believe this is a great opportunity for Kalgoorlie to be provided with a much needed upgraded facility for sport in the goldfields. We totally support the closure if outridge terrace. Regards Donna coughlan President Imperials netball club inc
#147	Support	As someone who grew up in Kalgoorlie and continues to return to this wonderful town and a past committee member of the Goldfields Giants, basketball was and always will be my sport. The importance of continuing to grow basketball in the goldfields should be placed high on the priority list - the facilities are well past due for an upgrade and improving them will not only improve the country development of basketball players but also other associated sports. Please allow the expansion of this stadium to help fuel future interest.
#148	Support	I support the permanent closure of outridge terrace to ensure the redeveloped basketball stadium is realised to it's full potential. The additional land should allow not only an upgrade but an expansion of current facilities which are tired and no longer fit for purpose. Kalgoorlie Boulder deserves a basketball stadium we can be proud of.

#149	Support	Kalgoorlie needs upgraded facilities for the youth and family attraction the city is severely behind in. Any attempt to bring more services and facilities with small sacrifice of existing comforts needs to progress forward if we have any chance of building for the future. 100% on board with this proposal, a long term resident of Kalgoorlie this is long overdue
#150	Support	Agree & support decision for proposed permanent road closure.
#151	Support	I have used this road regularly over the years as an exit from st marys primary school pickup/drop offs and for bball commitments. closing this road will have no impact on the flow of traffic as there is already a usable road that runs parallel and adjacent. I often use that road rather than outridge due to the speed bumps on this road.
#152	Support	The stadium is in desperate need of an upgrade, and the road closure will be unlikely to cause a major impact to surrounding residents. This will be fantastic for Kalgoorlie-Boulder.
#153	Support	This is a necessity for the town - considering how big basketball is within Kalgoorlie and also NBL1 it is embarrassing to have this stadium. Whatever needs to be done needs to be done and street closure is a minor issue when compared to getting the much needed new stadium!
#154	Support	This stadium is well and overdue for a new complex. It is very tired and was supposed to be airconditioned in the late 70's or early 80's. Still isn't and the parking is very poor. The facilities inside are definitely outdated and not good enough for a city this size. It is about time the mining companies in this town and council did something about it. I have lived here for over 40 years now and it is time to come into the 21st century.
#155	Support	Would be a massive reward bringing local talent toward the organisation and instills a greater act of professionalism within the basketball community. Hopefully Solves leaking roof issues as well as poor ventilation in summer. Would be a great investment for the foreseeable future
#156	Support	Road closure for development of basketball stadium will have a negligible impact and be offset by the immense benefits of the new facility
#157	Support	Do it
#158	Support	I would like to see the local basketball stadium upgraded at the expense of a small road in Outridge Terrace for the benefit of a large sporting community relating to basketball which is substantial in the town of Kalgoorlie. I am now 40 years old and have played in the same stadium here as a junior would dearly like to see it upgraded.
#159	Support	I think it should go ahead.
#160	Support	This has been a very dangerous rd for so many years for for all people using the stadium and should have been shut down way back
#161	Support	I think this is a fabulous idea. The stadium is long over due for up grades and partial road closure is minimal to the out come
#162	Support	Close the road
#163	Support	Anything to get a new stadium! Yes.
#164	Support	Close the road and build the stadium
#165	Support	I support the road closure for the communities benefit in a redeveloped basketball stadium. I personally do not believe traffic will be effected as a result of the closure.
#166	Support	This is a great opportunity I hope everyone can get in board with this. Let's go giants
#167	Support	I support the road closure
#168	Support	I think it will be much safer for all the traffic around the KBBA. I have been using this road for basketball for 22 years. It is mayhem during basketball seasons both KBBA and NBL1 seasons. I was there around less basketball times, multiple times and the road is quiet when there is no basketball.
#169	Support	I fully support the new basketball stadium
#170	Support	Please go ahead! Our community desperately needs an upgraded basketball stadium!!
#171	Support	Im in favour of the permanent partial road closure. Concept design of new stadium layout looks amazing.
#172	Support	Close the road the facility has not been updated since the 1990s we need to get with the times and catch up to other regional ares with their brand new facilities
#173	Support	I think it's a good idea to close the road. People will be safer getting to & from the stadium as well
#174	Support	It should go ahead. The stadium is an eye sore anyway and no one uses the road except stadium attendees
#175	Support	Great idea. Stadium needs an upgrade especially with all the work nbl1 has but into their program
#176	Support	Close the road
#177	Support	I whole heartedly support the road closure of Outridge Terrace to enable the long over due redevelopment of the Kalgoorlie Boulder Basketball Stadium. The closure is in the best interest for the ssfety of all children/ parents accessing the carpark.
#178	Support	Stadium's in desperate need of an upgrade, will benefit everyone in Kal, minor inconveniences of very few shouldn't stop the development
#179	Partially support	I think it is a great idea to close the road temporarily while the stadium gets the renovation this town needs will make it safer and easier for everyone

#180	Support	I absolutely support the road closure, the stadium needs to be redone desperately and that road isn't used for much else other than the basketball courts so I don't see why it would be cause for a big problem
#181	Support	Close the road, the new stadium will be great for our town
#182	Support	Support the move, bring it on
#183	Support	I am full support of whatever is required to improve our ageing basketball facilities. A town suck as ours requires better facilities and the road closure will cause minor inconvenience at most and be quickly forgotten.
#184	Support	Yes please close Outridge Terrace for upgrade of basketball stadium
#185	Support	A partial road closure is a minor issue when compared to building of a brand new basketball stadium. The stadium is a much needed venue for the community
#186	Support	It's more then necessary if it means the go ahead of a redevelopment of the basketball stadium which is massively overdue!
#187	Support	No problems with closing out ridge terrace
#188	Support	I think closing the road will make way for a much needed upgrades for a new stadium
#189	Support	Permanent road closure, to be more safe and appealing, another asset to the town!
#190	Support	I support any closures to get this stadium built for the kids and basketball lovers in Kalgoorlie.
#191	Support	I support the road closure
#192	Support	I'm all for creating a modern basketball stadium and I'd that means closing the road well let's do it. 100% support it.
#193	Support	I support the permanent road closure. So our community can have a better basketball facility
#194	Support	I agree with the proposed closure.
#195	Support	My feedback is close the road to allow for expansion
#196	Support	Great idea for the road closure Our community needs the centre to be updated Basketball is big here And we have great players They deserve this
#197	Support	New development is much needed I'm sure the planning will allow for modifications regarding the traffic flow using other existing routes
#198	Support	I support this proposal to ensure our basketball community have access to better facilities. It will be a huge boost to our community for visiting basketball teams too.
#199	Support	Help Basketball in Kalgoorlie.
#200	support	Would be a great result for Kalgoorlie
#201	support	I support the permanent closure of Outridge Terrace to build the most overdue basketball stadium
#202	support	A great initiative. Any council members who stand in the way of this are populist anti progress hacks. How on earth could you listen to the regressive minority in the face of a great development for the city? Please don't let fools stand in the way of progress
#203	Support	I think that the road should be closed to allow for the basketball stadium redevelopment
#204	Support	Closure of the road will ensure a great new stadium is completed and many children and adults get to play and enjoy this new facility.
#205		Please Do the revamp ive been a fan for 10+ years and i think it would bring a lot more tourists is you revamped the stadium
#206	Support	The permanent road closure is 100% necessary as long as they utilise the space effectively and provide adequate car parking during the new build/project. This is LONG overdue for Kalgoorlie and MUST be done to secure the future of basketball in the Goldfields.
#207	Support	Close the road
#208	Support	Please close Outridge Terrace to allow the development of the new stadium. It will also make the area safer
#209	Support	Close the road
#210	Support	This is fantastic and needs to happen for the goldfeilds. Yhe closure of the road is going to bring amazing asset to our community!!
#211	Support	This closure is minor issue compared to the advantages this new development will bring to the town Especially for younger generation As a born & bred resident, I hope this just the start of providing great sporting facilities.
#212	Support	I support the development of the Kalgoorlie basketball stadium and the required road clousure to proceed with the project.
#213	Support	I think it's a great idea to permanently close off the road, it will provide a safe entrance into the facility. There should be consideration on an area around the facility for drop off/pick up, especially for kids to be dropped off, and people with a disability/mobility issues should be considered in the design.
#214	Support	I support the closure of outridge to better the access to the Basketball Stadium. Park Street can be used to divert traffic through the area
#215	Support	Due to the high volume of Children that cross the road to access the stadium I support the closure of Outridge Terrace. The road adjacent to Outridge will still provide access for both residents in the area and through traffic using the road
#216		It's expanding this is a good thing for our Community!
#217	Support	Close the road so we can have an amazing facility

#218	Support	The stadium is vastly dated, worn out and in desperate need of new appliances/change rooms etc. Also, the stadium is increasingly struggling to provide enough courts for training and game day to the strong number of players (juniors and seniors). The road closure would allow the stadium rebuild to which would provide the community with a decent workable facility. Thank you
#219	Support	I highly support the closure of Outridge Terrace in order to further plans for the new Basketball Stadium
#220	Support	Basketball means a great deal to myself and many others. I would love for a more improved stadium to help develop my skills and let others understand the happiness this sport can bring us. I strongly believe that this should be allowed to not just help better our community but to better ourselves. Please this would mean the absolute world to me and many others!
#221	Support	Please support Outridge Terrace Road closure. We need this to happen to enable a new sporting facility to be built in the Goldfields, for our youth. It will also bring elite sporting teams from all over Australia to Kalgoorlie, to showcase their skills. We need this to happen!!
#222	Support	I reckon building this stadium will bring the hole goldfields community together and the kids even if they don't play basketball it's a good why to get them in to it
#223	Support	As someone who flies over to officiate NBL1 games, having the road closed to upgrade the stadium would be great so that more people in the Goldfields community can play basketball
#224	Support	Upgrade would be fabulous
#225	Support	Absolutely go ahead with whatever needs to be done in order to have our great stadium upgraded, the goldfields basketball association and all of Kalgoorlie residents who have grown up using the facility deserve it
#226	Support	Close the road
#227	Support	The road closure would be great and beneficial for the new facility and the basketball community.
#228	Support	Close the road and extend the basketball stadium
#229	Support	Happy for road to close
#230	Support	The upgrade of the basketball stadium is vital for the liveability of our town and to support and develop our local sporting community
#231	Support	It is not a necessary road to get any where. The same path can be taken by the road 500m behind the parking space.
#232	Support	I 100% support the road closure. If this will help get the ball rolling for the new stadium, then I say "YES". We need an upgrade to the stadium. We can't continue cancelling games due to the rain because it leaks in the stadium. Our future generation of basketballers deserve better.
#233	Support	Long overdue, whatever gets our stadium. Long overdue
#234	Support	Fantastic proposal with very little impact to traffic. Our entire family is looking forward to accessing the new Stadium
#235	Support	I support closing outridge terrace.
#236	Support	Outridge Terrace can be closed, with access to the current carpark via made from the three other surrounding streets, Parks St, Victoria St and Brookman St. This will free up additional land space for an upgrade and expansion of the very outdated old basketball stadium.
#237	Support	Great ideal Let's get it crackin.
#238	Support	Great idea fully support
#239	Support	much needed upgrade of stadium- i support along with my family anything required to complete said works. the town has a strong relationship with the basketball association and the Giants and it would be great to watch them play with better seated capacities and thought out design.
#240	Support	With the upgrade of the basketball stadium I believe it would be the best idea to close the road and help the stadium upgrade. I believe that they will use that area for making a better car park so players and spectators don't have to walk on uneven gravel.
#241	Support	The redevelopment of the stadium is crucial and the closure of Outridge Terrace is required for this to take place.
#242	Support	Basketball stadium is due for a major upgrade To have this type of facility in Kalgoorlie boulder would be so beneficial for our kids and allow the sport to grow
#243	Support	I would like to show my support for the permanent partial closure of Outridge Terrace, for the purpose of the expansion of the KBBA
#244		All for the redevelopment of the basketball stadium and the closure of Outridge Terrace to accommodate this
#245	Support	Happy for road closure
#246	Support	Refreshing to see this commonsense approach to provide Kalgoorlie with an answer to a problem that will benefit all residents and keep up with sporting facilities that all other regional Cities provide, It would be a complete injustice to have this Road left open when it can benefit all of Kalgoorlie so much by being closed. I cannot see how in anyway the closure would disadvantage anyone- Please let commonsense prevail.
#247	support	This is a great proposal idea as the open area can become safer for pedestrians if there was a formal car park and less 'random' parking options. Road safety = prevents accidents between vehicles and/or pedestrians. Go team!
#248	support	Cant see why this would be a problem

#249	Support	The stadium needs an upgrade immediately. I am for the movement of the stadium and is in support of any direction that needs to be done in order to have a stadium for the kids. Give them something to look forward to.
#250	Support	This facility is imperative for the whole community of the goldfields and beyond.
#251	Support	Agree to the partial road closure for the redevelopment of the ageing complex.
#252	Support	I am in favour of the partial closure of Outridge Terrace with new basketball stadium car park plans for the safety of all the families using the centre. The current car park over the road is dangerous with cars parked along the road vision is impaired for those crossing the road and cars travelling along the road, there is high potential for a serious pedestrian accident as even with speed humps vehicles do not travel slow enough. The current car park is also not maintained or zoned making it unsafe for both pedestrians and vehicles pedestrians, there are large potholes & no clear directions for cars, especially creating an access hazard for elderly & disabled. I support as part of Outridge Terrace closure, a new car park area. The new car park needs to be zoned for car and pedestrian areas and have a drop off area for parents driving through to collect kids. Thanks for accepting my feedback.
#253	Support	I agree to closure of the land to assist with redevelopment of the stadium so the city of Kalgoorlie -boulder can have the much needed improved basketball stadium
#254	Support	The stadium is old and run down and plans need to go ahead. The closure of outridge terrace won't affect the traffic as they can use Parks Street.
#255	Support	I support the proposed road closure. The current facility is ageing and the proposed upgrades will be great for developing participation numbers in sports as well as providing the NBL1 team great facilities to play well.
#256	Support	Closing the road is more acceptable then taking land from community services. You hav emu support
#257	Support	Close the street and develop the stadium to a standard that Kalg deserves
#258	Support	I support this project. It is long overdue
#259	Support	I don't foresee a major issue with the closure and support the development. I've used outridge street historically as a means to get to the back of St Mary primary. However there are nearby streets that would enable nearly the same route.
#260	Support	For the betterment of the town, I fully support the closure of this road to ensure a modern basketball facility.
#261	Support	Closing this road to build a new stadium has my full support
#262	Support	Why is this even a thing??? Why deprive our community of a great facility because of a small minority. Close the road.
#263	Support	Basketball stadium looks mint! Can't wait to have a great stadium for our great local team
#264	Object	The proposed street closure will increase traffic in Croesus St, where we live. What will be fine to manage the traffic increase?
#265	Support	I support the proposal to close the road to enable the expansion of the basketball stadium
#266	Support	For the future of basketball in Kalgoorlie the road needs to be closed for the new development. It appears the only people who use this road is parents and players dropping off kids or driving into the car park.
#267	Support	I think we should close the road so it is easier and faster to get our new stadium built.
#268	Support	I may not live in the area so the road closure wont effect me as much as other community memebers but I agree in colsing the road to rebuild the basketball stadium. The young kids who live in Kalgoorlie Boulder dont have much in the way of activites to do on the weekend so sport is one of there main events and if they want to close the road to rebuild the run down stadium then we should all agree this will benifet the children of Kalgoorlie Boulder.
#269	Support	Excellent idea. Good planning essential for adequate access to the car park from Park Street and more controlled parking on the existing parking lot.
#270	Support	The safety of our children is top priority - the road should be closed. I use the road to go the back way home and it's no hassle to divert along Park St. When I do use the road there's never any other traffic - other than when people are using the stadium.
#271	Support	Happy for the road to close for the much needed upgrades to the stadium.
#272	Support	This upgrade is well and truely needed for our Basketball facilities in the Goldfields - We have a very dedicated, enthusiastic, athletic community in Kalgoorlie-Boulder and the current facilities are cold, dark, insificient courts available and extremely below standards. It is not a good refelction on The Giants and our local teams. The new proposal looks fantastic and is not happening soon enough. It's about time this upgrade commenced.
#273	Support	So many people speed through that street while basketball kids are trying to cross the road. I would be happy to see it closed.
#274	Support	Happy for road closure
#275	Support	Better playing facilities.Safety of the children.
#276	Support	This would be a great thing for the community, being one of the larger sports in kalgoorlie expanding the stadium will allow for the competition to grow even more and possibly consider a winter comp
#277	support	I support the KBBA expansion plan & proposed partial road closure.

#278	Support	I support the closure of Outridge Terrace. The Basketball Stadium is a community space in need of an upgrade. Participants deserve a safe route of access to the venue.
#279	Support	I support the closure of Outridge Terrace
#280	Support	I am all for the road being closed to built the stadium ! I love playing basketball and would be very please for a new stadium.
#281	Support	I support the road closure as the stadium is in desperate need of an upgrade. With Park St still being available access to areas behind the stadium will nor be cut off.
#282	Support	Close Outridge Terrace
#283	Support	The stadium desperately needs an upgrade and these upgrades would be a positive for the community and the sport of basketball.
#284	Support	We desperately need new courts, the current courts are dangerous with that walls to close to the court, the roof is not water proof which makes the indoor courts wet every time it rains. The courts are in horrible condition and do not meet the needs of the community.
#285	Support	The development of the stadium will have huge benefits for the region. The road closure will have less impact on the community with traffic flow as opposed to the great benefits that will be provided to the community by utilising the land for the development of the stadium. My family and I are greatly in favour of the road closure.
#286	Support	Would you please close the road so that we can get a new stadium as the one now is old and potentially dangerous when it rains, etc
#287	Support	No one really uses the road other than those who are going to the basketball stadium. It makes sense to close this part to make way for the new stadium and to ensure the safety of those going to the basketball. There has been an increase in basketball players and spectators which is great for the game and Kalgoorlie
#288	Support	Closed the road and build the stadium. This is a much needed facility for the city of Kalgoorlie/Boulder residents. There are not so many first grade facilities particularly for our children in the i town and a facility like this will most definitely also bring more state run sporting events to our town. We have the funding now let's get the building
#289	Support	I support the closure as advertised which will ensure the participants of the sport of basketball in Kalgoorlie-Boulder have facilities equal to other major regional cities in WA. I don't believe the redirection of traffic into the adjoining roads will not cause an issue of overloading the local roads.
#290	Support	Great idea, will improve facilities which will improve community participation and more welcoming to visitors. The road isnt used much and not maintained like most roads and footpath in CKB. Please close the road.
#291	Support	Would be great to see this happen, well overdue
#292	Support	Road closure makes no difference to me
#293	Support	I think we need to close the road for when the works start. It will be so much easier and the workers are able to complete the stadium quicker! We have been waiting for this stadium for years and it's now the basketballs time to get their stadium done up
#294	Support	I wholeheartedly approve the closure of Outridge Terrace to conduct the upgrade of the basketball facility
#295	Support	I use this road to go to work and have no issues with the road closure.
#296	Support	Yes, we need the upgrade, that stadium is so old !
#297	Support	Close the road, the basketball stadium upgrade is long overdue and it's going to be such a beautiful thing to see.
#298	Support	For the safety of those attending basketball games, I support the closure of the street.
#299	Support	I agree with closing that section of road. It gets very busy with children and adults crossing there to get to the car park. It will also help with the building of new basketball courts and stadium
#300	Support	Great idea
#301	Support	It's great to see progression in Kalgoorlie. Closing this road needs to happen to allow the basketball stadium to expand/grow. Do it!
#302	Support	The stadium is in dire need of an upgrade. An updated stadium will be difficult without the partial closure of the road
#303	Support	Great facility road isn't needed
#304	Support	This would be great for the people of the Goldfields. Stadium definitely needs an up grade. People needing to access Broad Arrow Road are still able too via Parks Street without having to go too much further. Hopefully this goes ahead. Good luck.
#305	Support	Absolute must for the community and future of basketball in Kalgoorlie
#306	Support	I think it's a great idea to the new plan of partial closure of the road.
#307	Support	It would be a plus for the community to close this road (Outridge Terrace) and finally get something worthwhile in the way of a new stadium. Kalgoorlie is in desperate need for this development to happen
#308	Support	It makes logical sense to execute the partial closure of Outridge Tce. As Park St runs adjacent to Outridge Tce anyway the flow of traffic would hardly be affected as it is not a high volume thoroughfare. The benefits of expanding the basketball centre far outweigh the drawbacks created by the partial closure.
#309	Support	Close it, it is more safe for pedestrians.

#310	Support	No issues, Kalgoorlie needs a new stadium upgrade.
#311	Support	Agree with the permanent closure of the road- to enable to redevelopment of the Niels Hansen Basketball stadium.
#312	Support	The upgrade of the stadium is well over due and there is a road directly behind the proposed closure, it is only going to enhance the look of the area.
#313	Support	Close road
#314	Support	Absolutely would love a new stadium, it's old and run down, the wooden crts are the best they are heaps better than the oasis wooden crts we just need a better modern building plus more in door crts to go with them
#315	Support	I approve the proposal
#316	Support	I approve of the closure of outridge terrace
#317	Support	I support the road closure.
#318	Support	I support the move to close Outridge Terrace as it will allow for more room for the new basketball stadium. It seems silly to have both Park and Outridge Streets where it could instead be used for land for the desperately needed basketball stadium.
#319	Support	As a former Chairman, Life Member of the Kalgoorlie-Boulder Basketball Association (KBBA) I am writing to the City of Kalgoorlie/Boulder Council as support for the closure of Outridge Terrace between Brookman Street and Victoria Street as part of the KBBA stadium redevelopment project and that the closed road is added to the KBBA's lease management order over the land. The KBBA has been successful in securing funding from all levels of Government (Local, State and Federal) for the upgrading of the 43-year-old Neil Hansen Basketball Stadium. The amount of committed funding is \$12,996,400.00 GST exclusive. The upgrade project will include the addition of two full sized courts, one being a show court which can be used for all relevant sports to host high profile games, upgraded and modernized amenities and a full internal refurbishment of the old three court stadium (refer attached concept layout) Basketball is one of the largest participation sports in the Goldfields with up to 1500 active members and promotes the City of Kalgoorlie/Boulder nationally with telecast NBL 1 games, which now include both a men's and women's team. The stadium is also used by a number of other indoor sports including netball, volleyball, indoor hockey, as well as the Eastern Goldfields High School. Furthermore, the KBBA domestic summer season has large junior and senior team participation numbers, including indigenous and multi-cultural membership. The KBBA proudly supports the local Kalgoorlie/Boulder community, providing junior development programs and pathways opportunities for players to elite levels. However, the facility has now reached its used by date and does not support the growth of basketball and other indoor sports in the Goldfields. The KBBA has for several years fought hard for a facility upgrade and finally has been successful in securing the necessary funding to make this happen. The closure of Outridge Terrace between Brookman Street and Victoria Street is the most practical and functional outcome for the basketball extension and redevelopment. The closure will allow the addition of the two new courts with suitable alignment and modern amenities to be designed within the facility. It will be the best basketball/netball facility in Regional Western Australia. Additionally, there are further good reasons why this section of road should be closed: <ul style="list-style-type: none"> • During the KBBA domestic season, up to 5,000 + people a week cross Outridge Terrace to enter and exit the basketball stadium, which constantly puts members and families at risk. It is a major OSH/safety hazard issue. • The closure will allow us to redesign and increase the size of the basketball car park, while at the same time removing the safety hazard. • Entry to the car park could easily come off Park Street or a number of other entry points. This would also provide access to Southern Cross Homes (formerly the Little Sisters). That complex has two gates onto Outridge Terrace, one of which has not been used for years. • A full traffic management plan/audit will also be undertaken as part of the redevelopment design. • There would be a saving to council in that you would only have to service and maintain the one road rather than the existing two. Park Street provides the same access for local traffic as does Outridge Terrace. We ask the council to consider this request as it is "A ONCE IN A GENERATION PROJECT AND OPPORTUNITY". The funding is unlikely to become available again and basketball has fought hard to make this happen. The council has acknowledged the need to upgrade the facility and the value that the KBBA brings to the quality of living in Kalgoorlie/Boulder, including the attraction and retention of residents and importantly families. Additionally, the project will have a strong economic focus on local content and buying, supporting local jobs within the community

#320	Object	I disagree with the road closure to build a basketball stadium across the roadway. Due process perhaps will of scene the proposed road closure advertised prior to design of a building over the road. The eastern end of historic Hannans foundational settlement of Kalgoorlie Boulder land use is undervalued in the CKB land planning thinking and guidance. Mining piecemeal is not reason to impact residential and historic localities. The CKB adopted motion wte to include the top end of Hannans Street in the Heritage Precinct of Kalgoorlie appears to have been wte 'ignored' in developing the LPS2. The northern section of Outridge Terrace that is proposed for closure is a required access road and thoroughfare to support improved social amenity of the historic settlement in the locality and expand upon the current (private) Victoria Park. The vacant land between southern Outridge Terrace (proposed for closure) and Parks street, deserves to be attended and upgraded in an overview aspect of ALL of the eastern end from the historic Gold Discovery site on Outridge Terrace known as Paddy Hannans Tree, to historic Victoria Street. The City of Kalgoorlie Boulder has not embraced the value of the residential land aspects at the eastern end of Kalgoorlie Boulder inclusive of in this instance. Expanding a conflicting land use of high traffic, high intensity sporting complex neighbouring a residential and also a senior citizens nursing home is not conducive to crrating the long overdue and required improvement to liveability and social amenity of Kalgoorlie Boulder. The closure of Outridge Terrace (northern) is evidence in itself of failures in land planning by the CKB to incorporate superior solutions. As with other high volume sporting complex's in regional cities, such as Bunbury, the activities share their home in more suitable land use areas such as the Halifax industrial locality and sporting ovals and whole sporting complexes. Understanding this existing Basketball Stadium is perhaps built on the original more passive gathering of tennis courts, it is to be remembered perhaps we did not even have too many vehicles in them days, therefor the argument it has always been sporting is also outdated. I 100 % disagree with the permanent road closure of Outridge Terrace. Best wishes with finding an alternative. Thank you for the opportunity to provide this comment
#321	Support	Happy to go ahead with facility, creates a better outcome for the sport and community recreation buildings.
#322	Support	I think this would be a great idea. The stadium would be a fantastic addition to our sporting facilities here in Kalgoorlie. The current stadium certainly needs some attention and if we can have a world class facility like that proposed - why not!?
#323	Support	I don't see any reason why outridge terrace cannot be closed for the duration of the time needed to build a new stadium as it affects no residents.
#324	Support	I agree with the closure
#325	Support	Yes close the road. Much safer for kids cruising at night
#326	Support	The road closure makes sense and should be converted to extend the car park area for the stadium. Making using the car park and the stadium safer for adults and kids. Wil create extra parking as well and can upgrade the car park area which needs it because it's a terrible car park when it's been raining. Sealing the Car Park is well over due and offer covered areas so entering the stadium on wet days is easier and much dryer for all people attending.
#327	Support	Grew up in Kalgoorlie, loved my basketball, fully support this initiative
#328	Support	What a great stadium for Kalgoorlie-Boulder. State of the art for not only all basketball, but a better show place for men's & woman's Giants NBL1 teams. Visiting teams usually come by bus and they need parking. The need to close Outridge Tce is essential for more parking.
#329	Support	Please played basketball 25 years, my daughter and my nieces still playing, time to update, state of courts, someone will get hurt, if road has to be closed, who cares
#330	Support	The plans look great. I vote to close off outridge terrace.
#331	Not stated	What's happening with the old basketball court? We need to know how the new facility is going to be set-up? The design of the facility not just the front of it!
#332	Support	Happy for you to close Outridge Terrace.



COMMS PLAN

Outridge Terrace Permanent Partial Road Closure

COMMUNITY CONSULTATION

Project: Outridge Terrace Permanent Partial Road Closure
Compiled by: Pia Timu – Head of Marketing
Issue date: 14/07/2022

Head of Marketing Approved: Yes
Signature: _____

Manager/Team Leader Approved: _____
Name: _____
Signature: _____

Upon sign-off on the Comms Plan, the authorised approver is responsible for the content and distribution strategy outlined in this Plan.





Outridge Terrace Permanent Partial Road Closure

Community Consultation closes 19 August 2022

1. Background:

The City is proposing a permanent partial road closure of Outridge Terrace to support the upgrade and expansion of the Kalgoorlie Basketball Association facility.

The permanent partial road closure will enable safe pedestrian movement to the facility by converting the closed section of road to a car parking area. Vehicular access to Park, Victoria and Brookman Streets will not be directly affected by the proposed permanent road closure.

2. Current Situation:

In accordance with s.58 of the Land Administration Act 1997 the City inviting the community to provide feedback on the proposal online via CKB UnEarthed or by mail to PO Box 2024, Boulder WA 6432. Feedback must be submitted in writing (online or by mail).

Feedback closed on the 19 August 2022

3. Key Stakeholders:

Stakeholders	Goal
Residential, community and business properties surrounding Outridge Terrace	Inform about proposed permanent closure and encourage feedback.
Wider Kalgoorlie-Boulder community	Inform about proposed permanent closure and encourage feedback.
Kalgoorlie Basketball Association	As the main users of the Basketball Stadium, ensure they are aware of the proposed closure and that community feedback is being sought.

4. Communication Requirements:

- Print Media – Public Notice ad in the Kalgoorlie Miner (booked for 15/07/2022)
- Social media schedule
 - Announcement post 15/07/2022
 - Reminder post 15/08/2022 (Monday of the week feedback closes)
- Website – publish public notice
- CKB UnEarthed – Create project page and feedback form
- Direct mail to surrounding properties, businesses and community groups
- Electronic Community Noticeboard – publish public notice





5. Contentious Issues and Impacts:

- Possible negative feedback on social media or CKB UnEarthed

6. Marketing Budget:

N/A	
Total	

7. Project Contacts:

a. Project Contacts

Contact Name	Contact Position	Contact Number
Ric Halse	Manager Planning, Development and Regulatory Services	08 9021 9600

b. Communications/Media Contacts

Contact Name	Contact Position	Contact Number
Pia Timu	Head of Marketing	9021 9866

c. Contentious Issues Contacts

Contact Name	Contact Position	Contact Number
Ric Halse	Manager Planning, Development and Regulatory Services	08 9021 9600





8. Project Task List:

Task	Responsible	Status
Develop Comms Plan	Pia Timu	Completed
Book Public Notice in the Kalgoorlie Miner	Brent Jackson	Completed
Create print ad and social media tiles	Brent Jackson	Completed
Website – publish public notice	Brent Jackson	Completed
Photograph venue	Pia Timu	Completed
Create project on CKBunEarthed	Pia Timu/Brent	Completed
Draft and schedule social media posts	Pia Timu	
Direct mail / letter to surrounding residents, businesses, and community	Ric Halse	

9. Graphic design:

Print Ad - Kalgoorlie Miner




PUBLIC NOTICE

Proposed Permanent Partial Road Closure Outridge Terrace, Kalgoorlie

S.58 OF THE LAND ADMINISTRATION ACT 1997

The City of Kalgoorlie-Boulder is seeking community feedback on a proposed permanent partial road closure of Outridge Terrace to support the upgrade and expansion of the Kalgoorlie Basketball Association facility.

The permanent partial road closure will enable safe pedestrian movement to the facility by converting the closed section of road to a car parking area. Vehicular access to Park, Victoria and Brookman Streets will not be directly affected by the proposed permanent road closure.

In accordance with s.58 of the *Land Administration Act 1997* the City invites the community to provide feedback on this proposal in writing to the City by no later than 19 August 2022.

For project updates and to provide feedback online visit www.ckbunearthed.com.au or send your feedback by mail to the Chief Executive Officer, PO Box 2042, Boulder WA 6432.

For more information contact Manager Planning, Development and Regulatory Services, Ric Halse on (08) 9021 9600 or email at mailbag@ckb.wa.gov.au

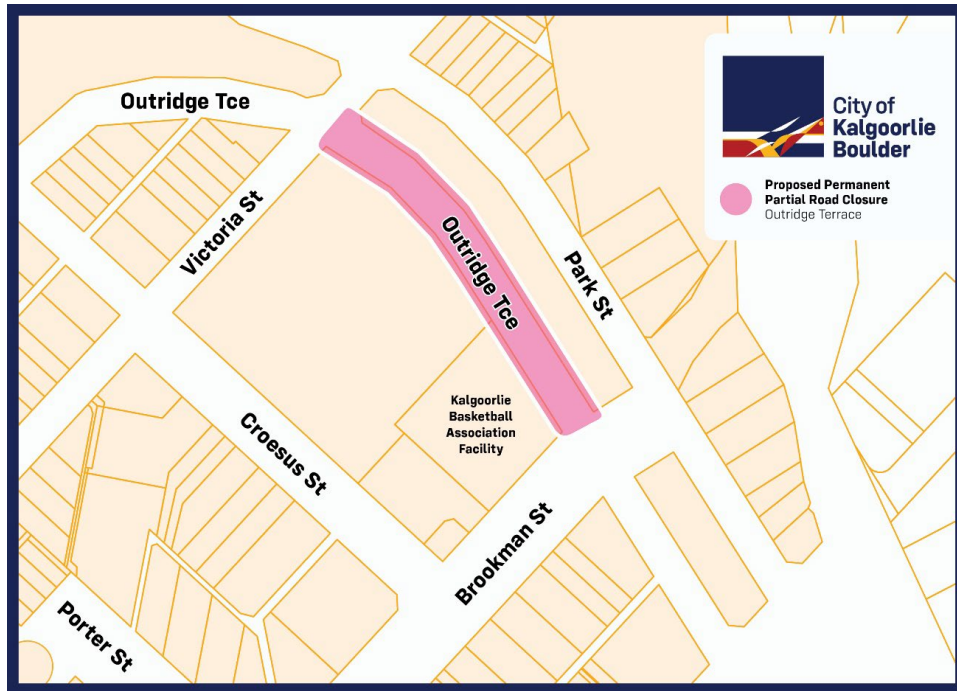
ANDREW BRIEN
Chief Executive Officer







Map design for CKB UnEarthed and Social Media.





10. Social Media post drafts:

Photos: <O:\Office of the CEO\COMMUNICATIONS TEAM\Graphics\Active\Brent\2022-07 - Outridge Terrace Public Notice>

Date	Platform
<p>Scheduled: 15.07.22</p> 	<p>Facebook</p> <p>We're seeking your feedback on a proposed permanent partial road closure of Outridge Terrace to support the upgrade and expansion of the Kalgoorlie Basketball Association facility.</p> <p>Submission due by 19 August 2022.</p> <p>To find out more and have your say visit >> https://www.ckbunearthed.com.au/outridge-terrace-permanent-partial-road-closure</p>
<p>Scheduled: 15.08.22</p> 	<p>Facebook</p> <p>Don't forget to submit your feedback on the proposal to permanently close a section of Outridge Terrace.</p> <p>Submissions close this Friday 19 August 2022.</p> <p>To find out more and have your say visit >> https://www.ckbunearthed.com.au/outridge-terrace-permanent-partial-road-closure</p>





11. Media release:

N/A

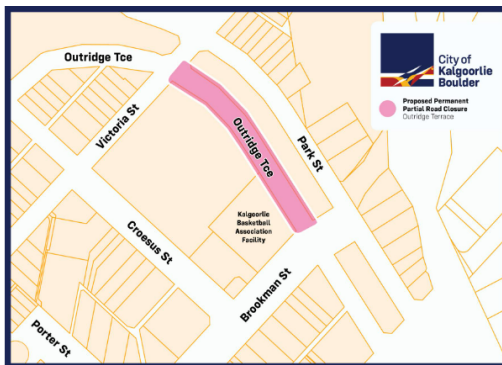
12. Website content:

To appear under public notices

The City of Kalgoorlie-Boulder is seeking community feedback on a proposed permanent partial road closure of Outridge Terrace to support the upgrade and expansion of the Kalgoorlie Basketball Association facility.

The permanent partial road closure will enable safe pedestrian movement to the facility by converting the closed section of road to a car parking area. Vehicular access to Park, Victoria and Brookman Streets will not be directly affected by the proposed permanent road closure.

Map of Proposed Closure



In accordance with s.58 of the *Land Administration Act 1997* the City invites the community to provide feedback on this proposal in writing to the City by no later than 19 August 2022.

For project updates and to provide feedback online visit www.ckbunearthed.com.au or send your feedback by mail to the Chief Executive Officer, PO Box 2042, Boulder WA 6432.

For more information contact Manager Planning, Development and Regulatory Services, Ric Haise on (08) 9021 9600 or email at mailbag@ckb.wa.gov.au

ANDREW BRIEN
Chief Executive Officer





13. CKB unEarthed

<https://www.ckbunearthed.com.au/outridge-terrace-permanent-partial-road-closure>

This project has been shared for preview. Submissions / Contributions on the engagement tools have been disabled.

Outridge Terrace Permanent Partial Road Closure

The City of Kalgoorlie-Boulder is seeking community feedback on a proposed permanent partial road closure of Outridge Terrace to support the upgrade and expansion of the Kalgoorlie Basketball Association facility.

The permanent partial road closure will enable safe pedestrian movement to the facility by converting the closed section of road to a car parking area. Vehicular access to Park, Victoria and Brookman Streets will not be directly affected by the proposed permanent road closure.

Map of Proposed Closure

Who's Listening

Ric Kalle
Manager Planning, Development and Regulatory Services
City of Kalgoorlie-Boulder
Phone: 08 9321 6000
Email: rick@ckb.wa.gov.au

Key Dates

Feedback 09:00 AM - 06:00 PM
19 August 2022





POST CAMPAIGN REPORT

Outridge Terrace Permanent Partial Road Closure

COMMUNITY CONSULTATION





Outridge Terrace Permanent Partial Road Closure

Community Consultation closes 19 August 2022

1. PR and media coverage

Summary	
Total Items Included	
City of Kalgoorlie-Boulder	4
Cumulative Audience Reach	25,250

Radio

Ivo da Silva's interview with City of Kalgoorlie-Boulder Development and Growth Director...

2022-08-19 07:40 ABC Goldfields WA - Breakfast | Circulation: 5,500

Ivo da Silva interviews City of Kalgoorlie-Boulder Development and Growth Director Alex Wiese about their call for feedback on the planned closure of a section of Outridge Terrace.

Grabs: City of Kalgoorlie-Boulder Development and Growth Director Alex Wiese says the city is consulting with the community on the partial permanent closure of a section of Outridge Terrace in Kalgoorlie. In this particular instance, the request to close the road has come from Kalgoorlie Basketball Association who are seeking to develop a new facility and we looked at various options to develop that facility, but now are needing to look at coming out into Outridge Terrace as all other development options have been exhausted. And so, we are consulting with the community to see where there is broad community support for the proposal. The feedback from the consultation will be included in a report to council, who will then used that information to make a decision on the road closure. The submissions close on the 19th of August and we are hoping to have the report go to the September meeting of the council.





Community feedback is wanted on a proposal to permanently close a section...

2022-08-16 11:01 Triple M Central Wheatbelt; Triple M Esperance; Triple M Goldfields; Triple M Great Southern; Triple M South West - News / Circulation: 9,750

Community feedback is wanted on a proposal to permanently close a section of Outridge Terrace. Get your opinion before Friday on the City of Kalgoorlie website.

[View More](#)

A proposal to permanently close a section of Outer Ridge Terrace is...

2022-08-16 10:06 Triple M Goldfields - News / Circulation: 5,000

A proposal to permanently close a section of Outer Ridge Terrace is now open to feedback from Kalgoorlie residents. Submissions close this Friday and you can have your say on the Kalgoorlie-Boulder shire websites.

[View More](#)

City of Kalgoorlie-Boulder residents are encouraged to have their say on the...

2022-07-18 10:02 Triple M Goldfields - News / Circulation: 5,000

City of Kalgoorlie-Boulder residents are encouraged to have their say on the proposed permanent road closure of Outridge Terrace. The closure will support the upgrade and expansion of the Kalgoorlie Basketball Association facility. Get your voice heard by August 19.

[View More](#)





2. Social Media Engagement

City of Kalgoorlie-Boulder

We're seeking your feedback on a proposed permanent partial road closure of Outridge Terrace to support the upgrade and expansion of the Kalgoorlie Basketball Association facility.

Submissions due by 19 August 2022.

To find out more and have your say visit >> <https://www.ckbunearthed.com.au/outridge-terrace...>

See insights and ads Boost post

29 24 Comments 16 Shares

Post Impressions ⓘ

10,370

Post reach ⓘ

9,425

Post Engagement ⓘ

1,635

Post Impressions ⓘ

10,547

Post reach ⓘ

10,102

Post Engagement ⓘ

1,071

City of Kalgoorlie-Boulder

Don't forget to submit your feedback on the proposal to permanently close a section of Outridge Terrace.

Submissions close this Friday 19 August 2022.

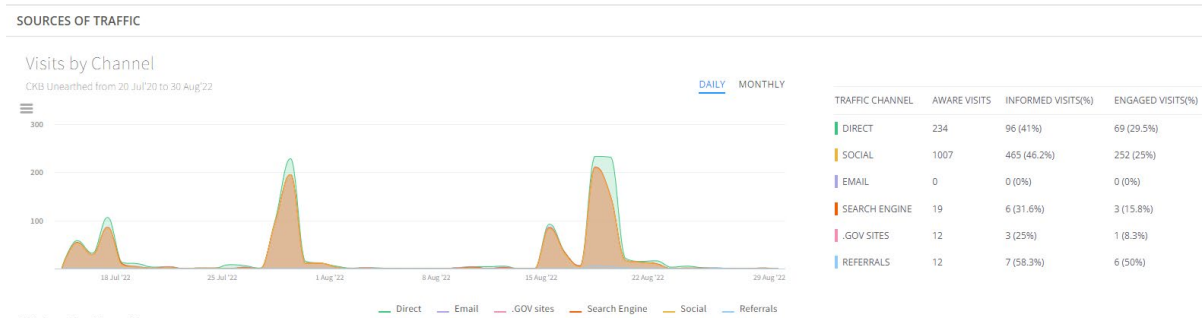
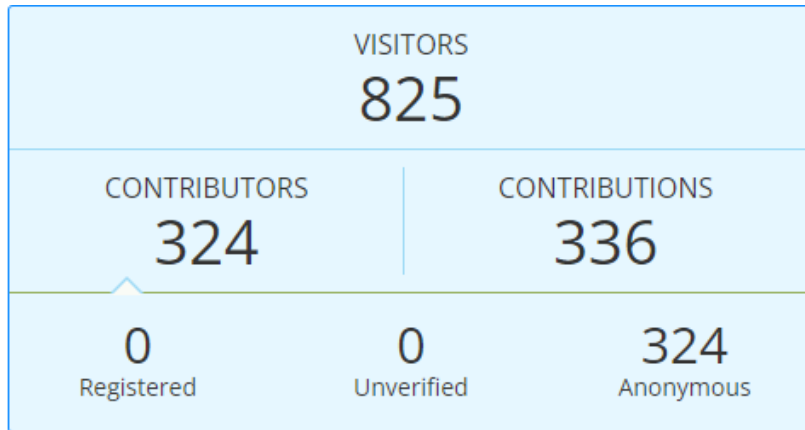
To find out more and have your say visit >> <https://www.ckbunearthed.com.au/outridge-terrace...>

See insights and ads Boost post

13 5 Comments 7 Shares



3. Community Engagement Platform - CKB UnEarthed





4. Paid Advertising

Print Ad - Kalgoorlie Miner

Saturday 16 July 2022



CITY OF KALGOORLIE BOULDER

PUBLIC NOTICE

Proposed Permanent Partial Road Closure

Outridge Terrace, Kalgoorlie

S.58 OF THE LAND ADMINISTRATION ACT 1997

The City of Kalgoorlie-Boulder is seeking community feedback on a proposed permanent partial road closure of Outridge Terrace to support the upgrade and expansion of the Kalgoorlie Basketball Association facility.

The permanent partial road closure will enable safe pedestrian movement to the facility by converting the closed section of road to a car parking area. Vehicular access to Park, Victoria and Brookman Streets will not be directly affected by the proposed permanent road closure.

In accordance with s.58 of the *Land Administration Act 1997* the City invites the community to provide feedback on this proposal in writing to the City by no later than 19 August 2022.

For project updates and to provide feedback online visit www.ckbunearthed.com.au or send your feedback by mail to the Chief Executive Officer, PO Box 2042, Boulder WA 6432.

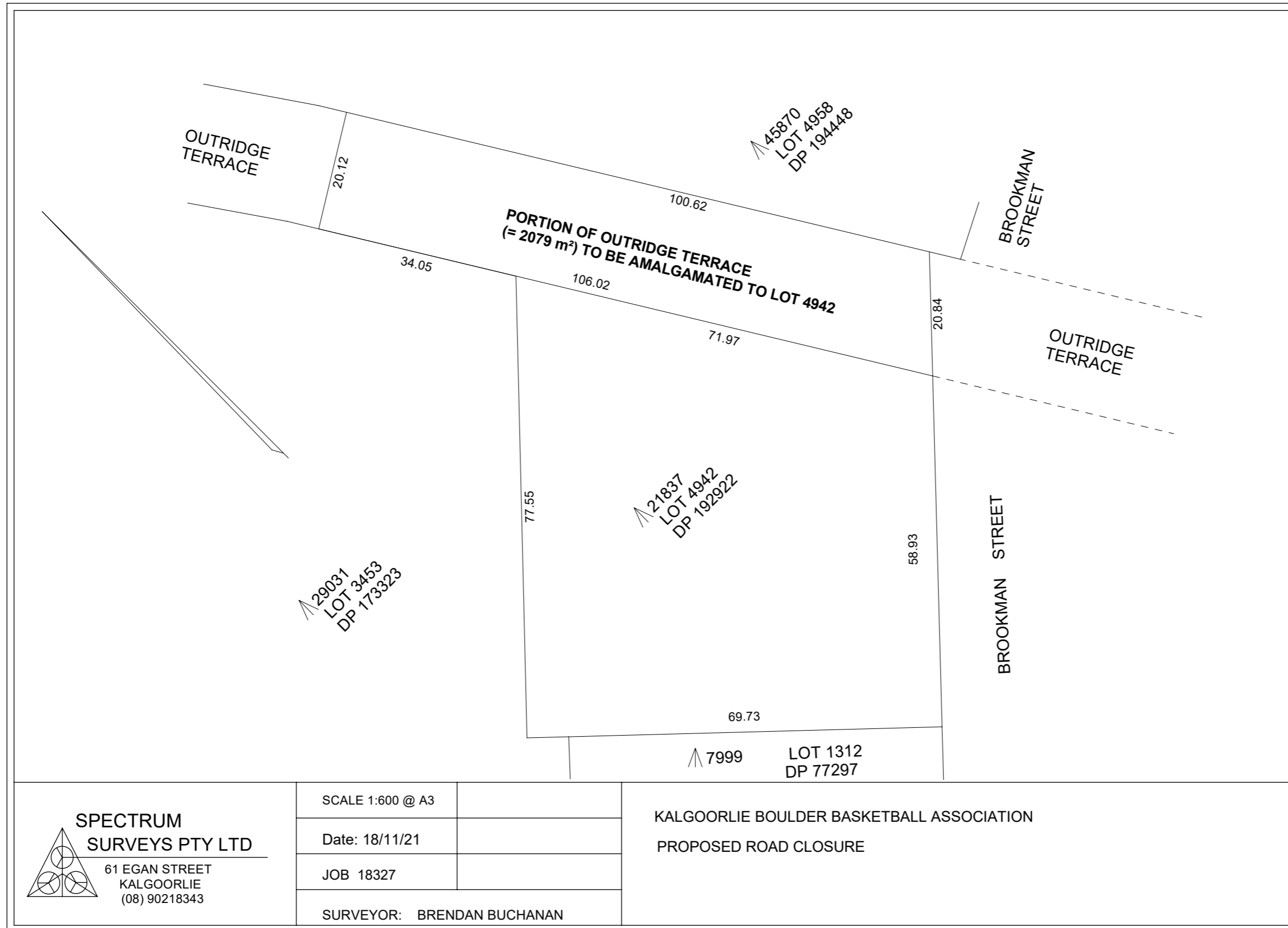
For more information contact Manager Planning, Development and Regulatory Services, Ric Halse on (08) 9021 9600 or email at mailbag@ckb.wa.gov.au

ANDREW BRIEN
Chief Executive Officer



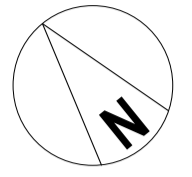


<p>ANY FORM OF REPRODUCTION OF THIS DRAWING IN FULL OR IN PART WITHOUT WRITTEN PERMISSION FROM H + H ARCHITECTS, CONSTITUTES AN INFRINGEMENT OF COPYRIGHT.</p> <p>CONTRACTOR TO CHECK AND VERIFY ALL DIMENSIONS, LEVELS & ANGLES ON SITE PRIOR TO COMMENCEMENT OF WORK. THIS IS A CAD DRAWING. DO NOT SCALE</p>		<p>ALBANY 9842 5558</p> <p>KALGOORLIE 9022 4015</p> <p>BUNBURY 9778 9600</p>	<p>PROJECT KBBA STADIUM REDEVELOPMENT 2 BROOKMAN STREET, KALGOORLIE WA 6430</p> <p>CLIENT KALGOORLIE BOULDER BASKETBALL ASSOCIATION</p>	REV	DATE	DESCRIPTION	DRAWN	DH	H+H NO.	7263 - 18	SCALE	1:500@A3
				1	11.11.2021	DOCUMENTATION						
<p>DRAWING OUTRIDGE TERRACE ROAD CLOSURE PROPOSAL</p>							<p>DWG NO.</p> <p>A2.0_1</p>		<p>REV.</p> <p>DATE 11/11/21</p>			





<p>ANY FORM OF REPRODUCTION OF THIS DRAWING IN FULL OR IN PART WITHOUT WRITTEN PERMISSION FROM H + H ARCHITECTS, CONSTITUTES AN INFRINGEMENT OF COPYRIGHT.</p> <p>CONTRACTOR TO CHECK AND VERIFY ALL DIMENSIONS, LEVELS & ANGLES ON SITE PRIOR TO COMMENCEMENT OF WORK. THIS IS A CAD DRAWING. DO NOT SCALE</p>		<p>ALBANY 9842 5558</p> <p>KALGOORLIE 9022 4015</p> <p>BUNBURY 9778 9600</p>	<p>PROJECT KBBA STADIUM REDEVELOPMENT 2 BROOKMAN STREET, KALGOORLIE WA 6430</p> <p>CLIENT KALGOORLIE BOULDER BASKETBALL ASSOCIATION</p>	REV	DATE	DESCRIPTION	DRAWN	DH	H+H NO.	7263 - 18	SCALE	1:500@A3
				1	11.11.2021	DOCUMENTATION						
<p>DRAWING OUTRIDGE TERRACE ROAD CLOSURE PROPOSAL</p>							<p>DWG NO.</p> <p>A2.0_1</p>		<p>REV.</p> <p>DATE 11/11/21</p>			



No.		AMENDMENT		DATE	CHKD
58 SERPENTINE RD, ALBANY WA 6330 PO BOX 5427, ALBANY WA 6332 ADMIN@H+HARCHITECTS.COM.AU WWW.H+HARCHITECTS.COM.AU 08 9842 5558					
H+H architects KALGOORLIE BASKETBALL STADIUM PROPOSED REDEVELOPMENT OF EXISTING BASKETBALL STADIUM					
DRAWN	DN	SCALE	1:500 @ A1	DRAWING	
CHECKED	JD	DATE	19/02/2021 2:23:11 PM	SITE PLAN	
APPROVED	JD	PROJECT No.	7263-18	DRAWING No.	REVISION
ARCHITECTURAL				SK10	