



City of
Kalgoorlie
Boulder

Waste & Recycling Guide 2024



A helpful guide to all things waste and recycling in the City of Kalgoorlie-Boulder.



HOUSEHOLD RECYCLING CALENDAR 2024

JANUARY

M	T	W	T	F	S	S
1	2	3	4	5	6	7
8	9	10	11	12	13	14
15	16	17	18	19	20	21
22	23	24	25	26	27	28
29	30	31				

FEBRUARY

M	T	W	T	F	S	S
	1	2	3	4		
5	6	7	8	9	10	11
12	13	14	15	16	17	18
19	20	21	22	23	24	25
26	27	28	29			

MARCH

M	T	W	T	F	S	S
		1	2	3		
4	5	6	7	8	9	10
11	12	13	14	15	16	17
18	19	20	21	22	23	24
25	26	27	28	29	30	31

APRIL

M	T	W	T	F	S	S
1	2	3	4	5	6	7
8	9	10	11	12	13	14
15	16	17	18	19	20	21
22	23	24	25	26	27	28
29	30					

MAY

M	T	W	T	F	S	S
	1	2	3	4	5	
6	7	8	9	10	11	12
13	14	15	16	17	18	19
20	21	22	23	24	25	26
27	28	29	30	31		

JUNE

M	T	W	T	F	S	S
					1	2
3	4	5	6	7	8	9
10	11	12	13	14	15	16
17	18	19	20	21	22	23
24	25	26	27	28	29	30

JULY

M	T	W	T	F	S	S
1	2	3	4	5	6	7
8	9	10	11	12	13	14
15	16	17	18	19	20	21
22	23	24	25	26	27	28
29	30	31				

AUGUST

M	T	W	T	F	S	S
	1	2	3	4		
5	6	7	8	9	10	11
12	13	14	15	16	17	18
19	20	21	22	23	24	25
26	27	28	29	30	31	

SEPTEMBER

M	T	W	T	F	S	S
						1
2	3	4	5	6	7	8
9	10	11	12	13	14	15
16	17	18	19	20	21	22
23	24	25	26	27	28	29
30						

OCTOBER

M	T	W	T	F	S	S
	1	2	3	4	5	6
7	8	9	10	11	12	13
14	15	16	17	18	19	20
21	22	23	24	25	26	27
28	29	30	31			

NOVEMBER

M	T	W	T	F	S	S
				1	2	3
4	5	6	7	8	9	10
11	12	13	14	15	16	17
18	19	20	21	22	23	24
25	26	27	28	29	30	

DECEMBER

M	T	W	T	F	S	S
						1
2	3	4	5	6	7	8
9	10	11	12	13	14	15
16	17	18	19	20	21	22
23	24	25	26	27	28	29
30	31					



● **AREA ONE** ● **AREA TWO** ● **NO SERVICE**

Please place your bins out by 6am for collection

For more information about the City's waste management please visit ckb.wa.gov.au/waste
 Phone: 9021 9600 Email: mailbag@ckb.wa.gov.au Postal: PO Box 2042, Boulder, WA 6432 Admin Building: 577 Hannan Street, Kalgoorlie

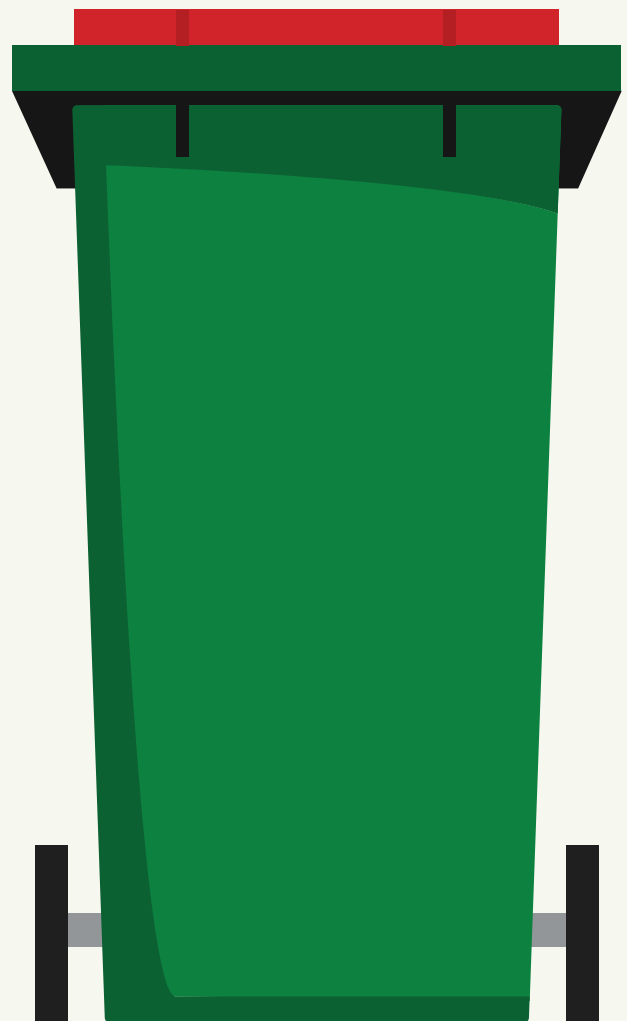


General waste

Everything you place in your general waste bin will end up in landfill. For this reason we encourage people to try to reduce, reuse and recycle as much as possible.

Use me for

Food scraps
Nappies and Wipes
Sanitary products
Dirty aluminum trays
Garden waste
Bottled cooking oil
Polystyrene
Plastic bags and light film
Pet waste
Ceramics and Pyrex
Cigarette Butts



Some useful information:

Remember to place your bins next to your kerbside by 6am on collection day • Once emptied, please remove your bins from the kerbside • Avoid overfilling your bins • Place your bins at least 80cm apart • Do not park vehicles in front of your bins • Damaged bins can be reported to the City on (08) 9021 9600

What can I recycle?

SIMPLY 5
RECYCLING
MADE SIMPLE!



These 5 items are safe to place in recycling.
Keep recycling clean, dry and unbagged.



Paper



Glass



Cardboard



Plastic



Tins



Some common items placed in recycle bins that cause contamination and can ruin your recycling:



Leftover Food



Broken Glass



Textiles



Soft Plastic



Liquids



Be careful with what you put in your recycle bin, these everyday items cannot be put in your recycle bin:



Batteries



Polystyrene



**Greasy Pizza
Boxes**



**Used Tissues,
Nappies, Wipes**



**Crockery,
Ceramics**

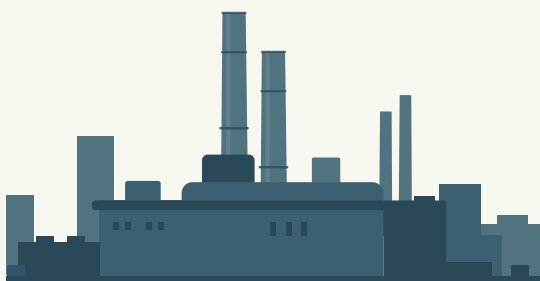
Where does my recycling go?

A super great question! Many people would like to know what actually happens after their recycling is collected in Kalgoorlie-Boulder.



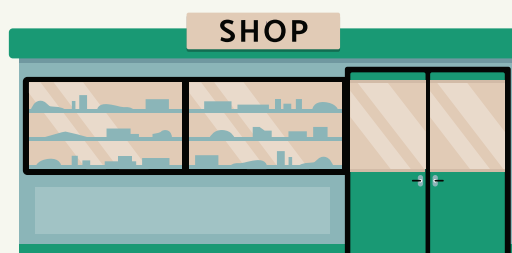
So from the start... after you have sorted your recycling and placed your bin on the kerbside for collection...

your recycling is collected by the Cleanaway's recycling truck.



Your recycling is sorted into various saleable streams and sold overseas.

Your recycling is sorted locally at the Cleanaway Depot to remove any contamination and transported to the Materials Recovery Facility (MRF) in Perth.



Who then can create new products from your recycling.

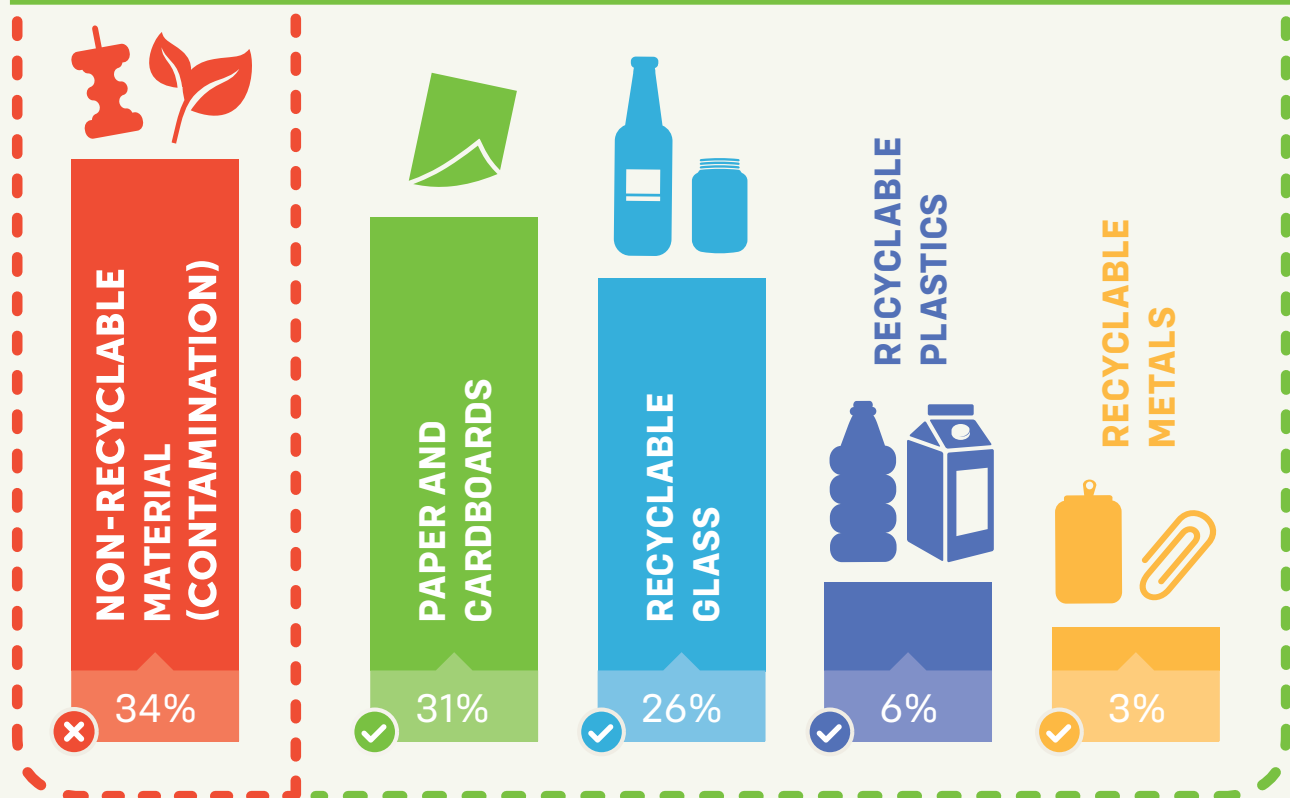
Finally to be seen back in stores as products for you to buy.

How are we doing?

Kalgoorlie-Boulder, you're doing a great job already! In 2020, the average recycling bin in Kalgoorlie-Boulder weighed 8kg at collection, however, there are some things that you may not be aware of.

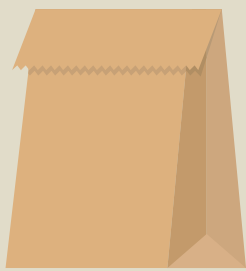
If we can lower the amount of non-recyclable material placed in recycle bins, it helps us to process items as efficiently as possible ensuring we divert as much from landfill as we can.

What was in Kalgoorlie-Boulder's recycle bins in 2020?



Why should we continue recycling in Kalgoorlie-Boulder?

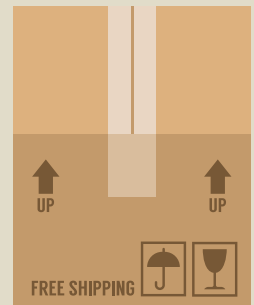
Because some things never truly break down after we've thrown them away. This is how long some items take to break down:



1 months



2 months



2 months



*Petrochemical products never truly breakdown and remain in the environment forever.

450 years



> 1 million years



1-2 million years

The best thing you can do to reduce your waste is to avoid single use plastic, recycle as much as possible and only buy things you need. Other tips include:

- Use reusable bags, keep cups and water bottles
- Buy or sell second-hand and donate used goods
- Avoid items with lots of packaging
- Use a worm farm or compost bin
- Say no to junk mail



Other recycling options



Mobile Phones and accessories

Can be dropped off at a MobileMuster point (Telstra, Vodafone and Optus Kalgoorlie).



Good quality clothing and homewares

Bring to your nearest charity store during opening hours or charity bin.



Soft Plastics

REDcycle bins are located at the entrance of Coles and Woolworths. Any scrunchable plastics can be disposed of here for recycling. If you can't do this, make sure soft plastics are placed in your general waste bin.



E-Waste

Such as televisions, computers and accessories can be disposed of for free at the Yarri Road Refuse Facility and placed in the Tech Collect container.



Empty gas bottles

Take your empty gas bottles to any 'Swap and Go' location to recycle or replace.



Lead acid batteries, scrap metals and white goods

Can be disposed of for free at Yarri Road Refuse Facility.

Bulk bin services

The City of Kalgoorlie-Boulder provides its residents with general waste bulk bins. Households are entitled to one bulk bin per financial year.

A maximum of 4 cubic meters and 1000kg in weight of waste will be collected.



Allowed

Green Waste
e-Waste
Scrap Metal
Small Household Furniture
Timber (small pieces)

Prohibited

Asbestos
Gas Cylinders
White Goods
Car Bodies, Parts, Batteries, Tyres
Building Materials - (i.e. Bricks, Sand, Soil, Rubble or Concrete.)
Mattresses

Do I have to pay for my bulk bin?

Yes, there is a fee as per the City's schedule of fees and charges. Concessions are available, visit ckb.wa.gov.au/bulkbin.

Can businesses have a bulk bin?

No, commercial operators are not entitled to this service. The City's bulk bin service is for residential premises only.

How long can I have the bin?

Your bin will be available for seven days. Delivery and collection will occur on the same day as your weekly 240L bin service.

Can I put the bulk bin where I want?

You can request where the bin should be placed, however the final placement is at the driver's discretion.

What happens if I overfill my bin?

Do not overfill the bin. If you overfill your bin, you will be required to remove any excess waste yourself.



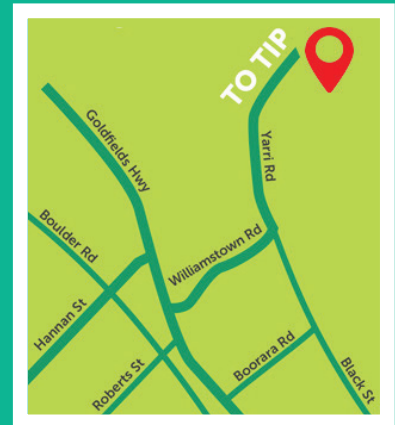
To order a bulk bin, book online at ckb.wa.gov.au/bulkbin or phone the City on (08) 9021 9600.

Yarri Road Refuse Facility

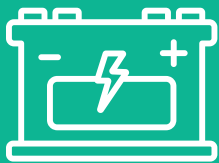
The Yarri Road Refuse Facility (YRRF) provides free disposal for household waste and is open Monday to Sunday from 7.00am to 5.00pm, with the exception of Good Friday and Christmas Day. Closing time is at 5.00pm sharp, please arrive by 4.30pm.

The YRRF is located on Yarri Road, approximately 7km north-east of Kalgoorlie-Boulder.

A list of fees and charges for the facility are available at ckb.wa.gov.au/charges. For further info, contact the landfill on 9091 4308 or the City on 9021 9600.



What can I recycle at the YRRF?



Lead Batteries



Aluminum Cans



Electronic Waste



Motor Oil (up to 20L)



Scrap Metal



Cardboard

Residential Tip Pass Policy

Domestic waste carried in vehicles and trucks larger than 1.2m x 2.4m, or carried in contractor vehicles on behalf of the resident will need a Residential Tip Pass. The policy allows residential properties one pass per financial year to dispose of up to four tonnes of waste at the YRRF for no charge.

To obtain a Residential Tip Pass please fill in the application form on the City's website ckb.wa.gov.au/yarri, and deliver to the City either in person or via email before disposing at YRRF.

Dob in a dumper

Help to stop illegal dumping. If you witness someone leaving their rubbish in the bush, please record details of the time, location, vehicle description, materials dumped, as well as any other relevant information, such as license plate and number, so Community Rangers can investigate and prosecute.

Visit ckb.wa.gov.au/dobinadumper to report or use the Snap Send Solve app.



The City may report illegal dumping to the Department of Water and Environmental Regulation. On conviction, the offence carries a **maximum fine of \$125,000 for corporations and \$62,500 for individuals**. City Rangers patrol illegal dumping hotspots and will issue **on the spot fines of up to \$2,000** for littering offences, which may be in addition to illegal dumping fines.



**City of
Kalgoorlie
Boulder**

Phone number: 9021 9600

Email address: mailbag@ckb.wa.gov.au

Postal: PO Box 2042, Boulder, WA 6432

Administration Building: 577 Hannan Street, Kalgoorlie