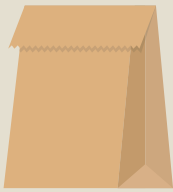


Why should we continue recycling in Kalgoorlie-Boulder?

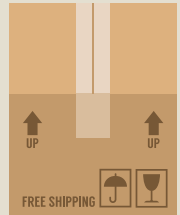
Because some things never truly break down after we've thrown them away. This is how long some items take to break down:



1 months



2 months



2 months



450 years



> 1 million years



1-2 million years

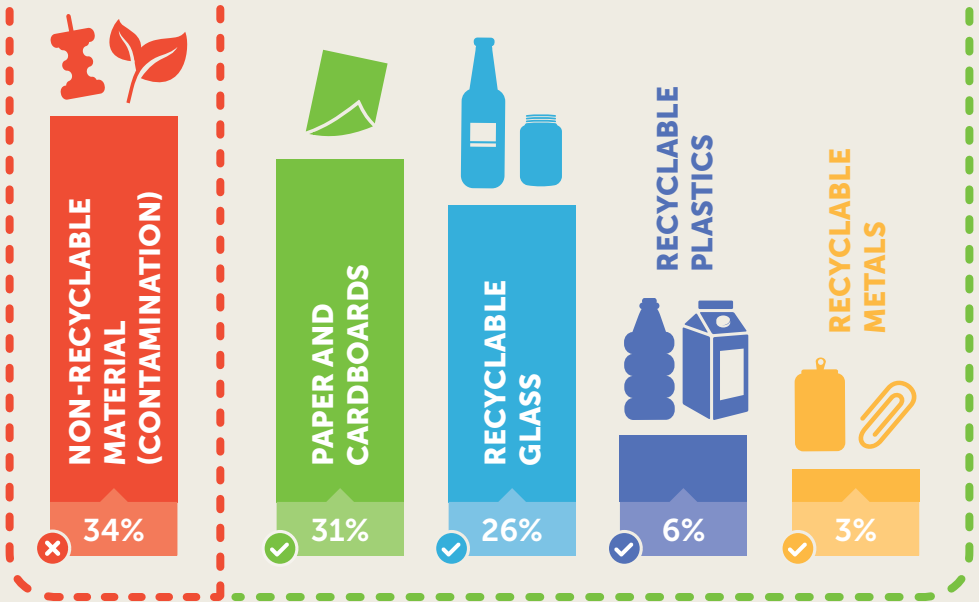
*Petrochemical products never truly breakdown and remain in the environment forever.

How are we doing?

Kalgoorlie-Boulder, you're doing a great job already! In 2016, the average recycling bin in Kalgoorlie-Boulder weighed 10.7kg at collection, however, there are some things that you may not be aware of.

If we can lower the amount of non-recyclable material placed in recycle bins, it helps us to process items as efficiently as possible ensuring we divert as much from landfill as we can.

What was in Kalgoorlie-Boulder's recycle bins in 2016?



Be careful with what you put in your recycle bin, these things cannot be recycled:

Unclean recyclable materials

(e.g. unwashed plastic containers with food residue & cling wrap still attached)

Recyclable materials packaged together

(e.g. recyclables in plastic bags)

Organic compostable materials

(e.g. food scraps and garden waste)

Assorted waste

(e.g. nappies, clothing, household rubbish, clothing, non-recyclable food packaging)

What items can and can't be recycled in our kerbside collection?



RECYCLE



Paper

- Phonebooks, Newspaper, Office Paper, Magazines, Junk Mail, Envelopes
- Cardboard

Plastic

- Milk and Juice Cartons*
- Plastic Bottles and Containers*

Glass & Metal

- Glass Bottles and Jars*
- Steel and Aluminium Cans inc. Aerosol
- Alfoil Trays*

*rinsed, lids separate



TRASH

- Garden waste
- Food scraps and wrapping
- Disposable nappies
- Plastic bags
- Clothing
- Polystyrene
- China, porcelain, broken glass
- Rubber, leather, foam products



What happens to your recyclables after you've put them in the blue bin?

Everything you place in your recycle bin gets sorted, some by hand, at the Kalgoorlie Material Recovery facility. Recyclable materials are sorted and sent to Perth for further processing.



Where can you get more information?

Confused? Excited? Want to know more? We can come to you!

Guess what, you can book a house visit through Kalgoorlie-Boulder Urban Landcare Group and together we can recycle right.

Contact us to make a booking.

Call: (08) 9021 9600

Don't have a recycle bin? Please get in touch with us!

CONTACT US:

Phone: (08) 9021 9690

Email: mailbag@ckb.wa.gov.au
ckb.wa.gov.au/recycling



Yarri Road Refuse Facility

We recycle a lot more at the Yarri Road Refuse Facility which is free for Kalgoorlie-Boulder residents. You can recycle:

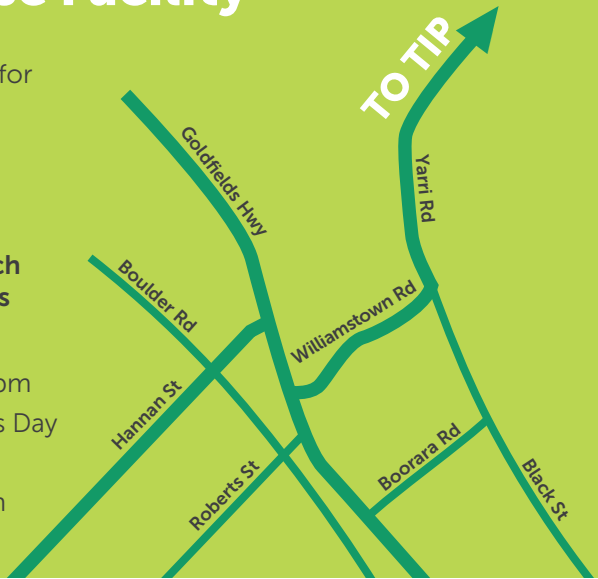
- ✓ Lead acid batteries
- ✓ Aluminium cans
- ✓ Electronic waste (E-waste) such as computers, TVs and printers
- ✓ Motor oil

Open: Monday to Sunday 7am–5pm

Closed: Good Friday and Christmas Day

Contact: (08) 9091 4308

Located on Yarri Road approx 7km north-east of Kalgoorlie-Boulder



The Recycling Bin Tag project is co-funded by the Waste Authority through the Waste Avoidance and Resource Recovery Account.



Printed on 100% recycled paper and 100% recyclable.